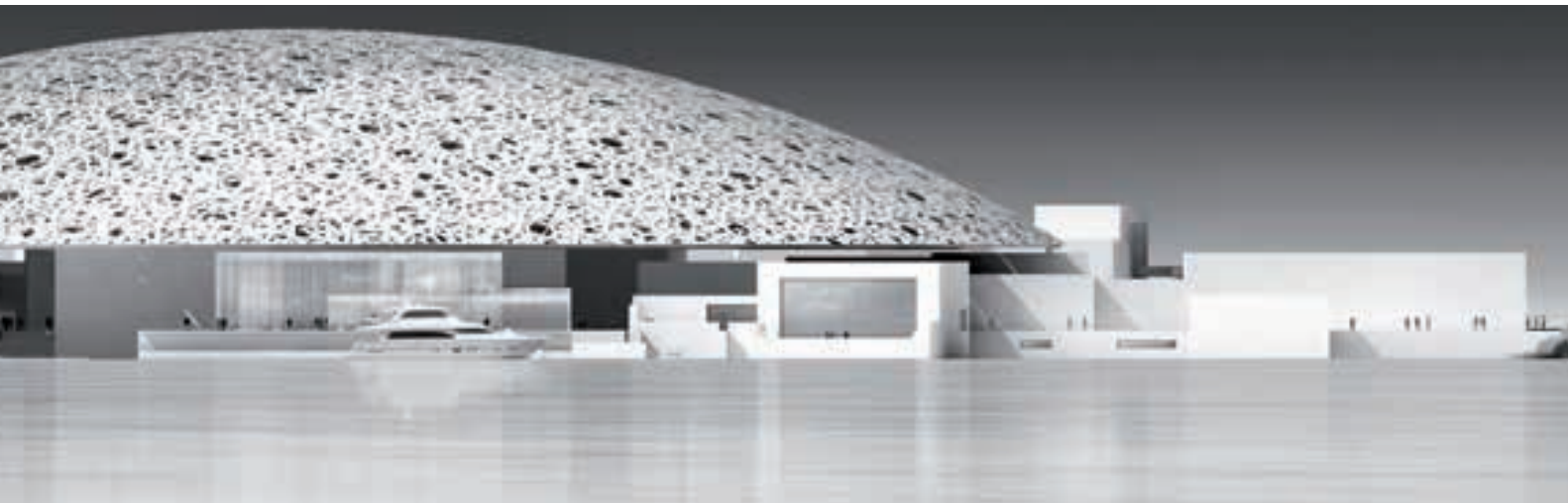




ANNUAL REPORT
2012



Louvre Abu Dhabi Museum (UAE)



Content

| | |
|------------|---|
| 04 | Letter from the Chairman |
| 06 | Corporate Governance |
| 08 | Milestones in 2012 |
| 18 | SANJOSE Constructora |
| 68 | SANJOSE Inmobiliaria |
| 78 | SANJOSE Energía y Medio Ambiente |
| 88 | SANJOSE Concesiones y Servicios |
| 98 | GSI Solutions |
| 104 | Carlos Casado |
| 110 | Comercial Udra |
| 116 | Corporate Social Responsibility |
| 122 | Directory |

LETTER FROM THE CHAIRMAN

Dear Shareholders,

Despite the difficult situation experienced during 2012, Grupo SANJOSE has improved its EBITDA margin from 11.2% in 2011 to 13.24% in 2012. This increase in margin is due to the business strategy developed by the Group in recent years and based mainly on three aspects:

- Geographic diversification: Grupo SANJOSE has focused on international recruitment, counting on key individuals of its team in countries on several continents. At the present moment, projects abroad account for 76% of its backlog and we believe that by the end of the year this figure will exceed 90%.
- Improved performance of works by acting directly on costs and achieving higher EBITDA margins.
- Diversification of Business: our business plan focuses on the geographic growth of all our business lines and on boosting markets where we operate. Such diversification is progressing, with increased concession business, which after the awarding of the Routes del Loa Highway in Chile raises future income from Concessions, Services and Energy to over EUR 2,000 million.

We are a global company with business vision and culture of permanence; wherever we go, we create and provide our actions with quality, efficiency, sustainability and innovation.

I would like to take this opportunity to thank our shareholders and partners for their support, our customers for their trust, our teams - who strive daily to keep SANJOSE a worldwide reference in societies undergoing full transformation - for their dedication and commitment.

Jacinto Rey
Chairman

CORPORATE GOVERNANCE

BOARD OF DIRECTORS

Mr. JACINTO REY GONZÁLEZ
Chairman. Executive

Mr. JACINTO REY LAREDO
Deputy - Chairman. Executive

Mr. ROBERTO REY PERALES
Chief Executive Officer. Executive

Ms. ALTINA DE FÁTIMA SEBASTIÁN GONZÁLEZ
Member. Independent

Mr. ROBERTO ÁLVAREZ ÁLVAREZ
Member. Independent

Mr. JUAN EMILIO IRANZO MARTÍN
Member. Independent

Mr. GUILLERMO DE LA DEHESA ROMERO
Member. Independent

Mr. JOSEP PIQUÉ CAMPS
Member. Independent

Mr. JAVIER REY LAREDO
Member. Executive

Mr. JAVIER PÉREZ-ARDÁ CRIADO
Secretary and Legal Adviser

COMMISSIONS / COMMITTEES

EXECUTIVE COMMISSION

Mr. Jacinto Rey González (Chairman)
Mr. Josep Piqué Camps (Deputy - Chairman)
Mr. Jacinto Rey Laredo (Member)
Mr. Guillermo de la Dehesa Romero (Member)

AUDIT COMMITTEE

Ms. Altina de Fátima Sebastián (Chairman)
Mr. Juan Emilio Iranzo Martín (Member)
Mr. Guillermo de la Dehesa Romero (Member)

APPOINTMENTS, REMUNERATIONS AND GOOD GOVERNANCE COMMISSION

Mr. Guillermo de la Dehesa Romero (Chairman)
Mr. Roberto Álvarez Álvarez (Member)
Mr. Juan Emilio Iranzo Martín (Member)
Mr. Jacinto Rey Laredo (Member)

INTERNATIONAL EXECUTIVE COMMITTEE

Mr. Jacinto Rey González (Chairman)
Mr. Josep Piqué Camps (Deputy - Chairman)
Mr. Jacinto Rey Laredo (Member)
Mr. Guillermo de la Dehesa Romero (Member)

Main Milestones in 2012

FOUNDATION STONE OF THE KNOWLEDGE TRANSFER BUILDING OF THE UNIVERSITY OF JAEN

The Rector of the University of Jaen, Manuel Parras Rosa, laid the foundation stone of the General Services and Knowledge Transfer Building of the Scientific and Technology Campus of Linares of the University of Jaen.

A building with a total built surface amounting to 6,217 m² which, since the design and planning of the Campus, was conceived as the most emblematic building of the complex. Importance arising from occupying the most singular and remarkable location within the Campus, at the main entrance, and from integrating all the services it provides: Management, Administration, Library, etc.

SANJOSE WILL DEVELOP ITS SECOND WIND FARM IN URUGUAY

The national power company of Uruguay UTE (Administración Nacional de Usinas y Trasmisiones Eléctricas) has awarded Vengano S.A. (Consortium formed by Grupo Sanjose, 40%, Corporación America, 40%, and Contreras Hermanos, 20%) the execution, development and maintenance during the following 20 years of a wind farm of 40 MW in the country department of Maldonado. Vengano will run the wind farm for the following 20 years by applying a concession model which ensures a fixed rate for each generated MW/h.

The contract type is that used by the national power company UTE in the awarding in 2011 to Fingano S.A. (Grupo SANJOSE, 40%, Corporación America, 40%, and Contreras Hermanos, 20%) of another wind farm of 50 MW, also in the country department of Maldonado.

Both projects make Grupo SANJOSE, with a total production capacity amounting to 90 MW, one of the main driving forces for the development of renewable energy within the country.

INAUGURATION OF THE GREATEST PRIVATE HOSPITAL OF THE BASQUE COUNTRY

The Igualatorio Médico Quirúrgico (IMQ) has opened at the neighbourhood of Zorrotzaurre the greatest private hospital within the Autonomous Region, with a total built surface area equivalent to nine football pitches, 157 beds and more than 50,000 m³ of reinforced concrete.

The complex built by SANJOSE and EBA has been provided with the latest generation diagnostic and therapeutic methods and has involved a total investment of EUR 85 million.

The opening of the private hospital by SANJOSE Constructora and EBA has gathered in the capital city of Bizkaia more than 400 people from various institutional, social, economic and health care settings. All attendees could appreciate the beauty of a reference building designed by Alfonso Casares and Carlos Ferrater consisting of six top level floors and three underground level floors arranged in a total built surface of 43,000 m².

The construction of this build is one of the first urban works related to the regeneration of the urban area of Zorrotzaurre, and the architects behind the project have designed a building integrated into the restructuring of the area developed by Zaha Hadid.



IMG Zorrotzaurre Hospital, Bilbao (Spain)

Royal Theatre of Ezcaray, La Rioja (Spain)

QUEEN SOFIA OF SPAIN INAUGURATED THE ROYAL THEATRE OF EZCARAY, LA RIOJA

Your Majesty the Queen Sofia of Spain inaugurated the Theatre of the Royal Rags Factory of Ezcaray (La Rioja) in the presence of the main regional authorities and an audience who enjoyed her presence at the city.

The construction of the theatre, under the orders of the Architect José María Pérez González (Peridis) and executed by SANJOSE, forms part of the restoration project of the Royal Cloth Factory, declared Spanish heritage site in 1992, and consisting of the Albergue de la Demanda, the Royal Factory and the City Council of Ezcaray.

The new theatre, with a total built surface amounting to 2,984 m² and 350 seats, consists of seating area, two floors, amphitheatre, rehearsal room, backstage and dressing rooms and a multi-purpose hall on the third floor.





Telefónica foundation Space, Madrid (Spain)



20 MW PV solar plant in Alto de la Alianza, Tacna (Peru)

THE PRINCES OF ASTURIAS OPENED THE NEW TELEFÓNICA FOUNDATION SPACE IN MADRID

The Prince of Asturias recalled that his great-grandfather, the King Alfonso XIII, used for the first time the telephone services between Spain and the States at this Telefónica Centre 84 years ago. Further, he highlighted the commitment to culture, innovation and technology of the project. "Now more than ever, especially at this moment, we should know how to face initiatives such as this, which boost and foster the social, cultural and economic development of Spain".

The new space designed by Miguel Ángel García Alonso (Quanto Arquitectura) and Belén Moneo (Moneo - Brock Studio) includes the restoration and remodelling for its new use as Museum of the Telefónica Foundation of the ground, second, third and fourth floors of the remarkable building located at 28, Gran Vía Street in Madrid. At present, the building comprises a lobby entrance where the store is located (900 m²), offices of the Foundation (400 m²), 4,200 m² of exhibition rooms and an auditorium foyer/hall of 1,000 m².

Among the most remarkable items executed by SANJOSE highlights the auditorium and the ceiling formed by exposed facilities, which follow a layout of straights and bends; and a newly-built circular staircase which may be considered as the first sculpture of the museum.

CONSERVATION AND MAINTENANCE OF THE MOST IMPORTANT GARDENS AND STREET TREE-LINED IN TERMS OF SURFACE AND BUDGET

The City Council of Madrid has entrusted the JV formed by SANJOSE Constructora (leader partner), El Ejidillo Viveros Integrales and Dasotec Ingeniería y Medioambiente the conservation and maintenance services of gardens and street tree-lined of the so-called zone 2 of the capital city for a period of two years.

Total surface of green spaces amounts to 787 hectares arranged into the districts of Moncloa- Aravaca, Fuencarral-El Pardo and Latina; which include so special spaces for citizens and tourists as El Pardo, Plaza de España, Paseo del Pintor Rosales, Puerta de Hierro, etc.

TEULADA AUDITORIUM CHICAGO ATHENAEUM INTERNATIONAL AWARD

Designed by the Architect Francisco Mangado and executed by SANJOSE, the Teulada-Moraira Auditorium has been awarded the Chicago Athenaeum International Award granted by the Chicago Athenaeum and the European Centre for Architecture Art Design and Urban Studies.

Jury members gathered in Oslo (Norway) and chose the 20 most important projects worldwide inaugurated last year. Their models shall be displayed at different cities worldwide on the exhibition The City and the World, whose starting point was Istanbul.



The auditorium, according to the architect, recreates "the continuous language between two natural elements: the sea and the mountains". The building is smooth and clean. Yet the top features a broken and abrupt geometry. The arrangement of items undergoes a space and geometric transformation. On the one hand, it recreates a stone beach which, from a certain distance and due to its depth, seems to blend with the sea. And at night time, this façade becomes a theatre stage, where the headlamp light illuminates the roads which join Teulada and Moraira.

In practice, this deep and abrupt geometry with a thick vertical concrete latticework structure, prevents sun lights from a direct impact on the inside of the building. It features a complex structure.

Inside, cantilevers resemble ocean waves. From a distance, the building may be seen as a volume covered with blue ceramics, resembling scales, similar to glass used tiles at Mediterranean church domes.

20 MW PV SOLAR PLANT IN PERU

SANJOSE has completed the construction at Alto de la Alianza (Tacna) of a 20 MW PV Solar Farm, the first to be connected to the national supply network of Peru. The solar plant shall produce 45 Gwh per year due to its privileged location in an intense solar radiation area, providing the national supply network with 80,000 PV solar panels with a total power amounting to 22 MWp.

Among executed works at a total built surface amounting to 60,000 m², highlight the execution of 10,440 m of primary and secondary roads, 4,430 m of a 2 m high perimeter fence, 18,000 micro-piles of 350 mm diameter and 3,100 mm deep and the assembly of 1,850,000 Kg of metallic structure comprising pillars, primary and secondary beams and transmission shafts.

EXECUTION OF CONCRETE ARCH BUILT BY LOWERING PROCEDURE OF THE ARNOIA VIADUCT OF THE HIGH SPEED RAILWAY LINE TO GALICIA

SANJOSE successfully executed in June the lowering procedure of concrete arches of the Arnoia Viaduct, located at the stretch Miaman - Ponte Ambía (Orense) of the high speed railway line Madrid - Galicia. Works at this stretch add a new milestone to this project in addition to that executed a few months ago with the breakthrough of the 852 m long Bouzas Tunnel.

The remarkable viaduct of reference has a total length of 1,014 meters and crosses the Arnoia river with a concrete pointed arch and the conventional rail line Zamora-La Coruña.

The stretch Miaman - Ponte Ambía of the Spanish high speed railway line Madrid - Galicia covers a total length of 6.7 km and crosses the municipality of Baños de Molgas, in the province of Orense.

In addition to the Arnoia Viaduct and the Tunnel of Bouzas, this stretch includes other remarkable structures, such as the Miaman Viaduct (177 m) and the Bouzas Viaduct (216 m).



Arnoia Viaduct, stretch Miaman - Ponte Ambía (Orense). High Speed Railway Madrid-Galicia (Spain)



5* Llana Beach Hotel, Salt Island (Cape Verde)

SANJOSE WILL BUILD ITS THIRD LUXURY HOTEL IN CAPE VERDE

SANJOSE will execute the 5* tourist complex "Llana Beach Hotel" in Cape Verde. A total built surface amounting to 46,065 m² (in a plot of land of 74,858 m²) where 601 luxury suites will provide clients with multiple choices capable of satisfying all needs and requirements: Junior, Garden, Duplex, Beach front and Swim up.

The hotel is surrounded by gardens, 10 swimming-pools, several bars and restaurants, a SPA, a gym, an open-air sauna, Beach Club, etc.

A part of the complex will be devoted to family tourism. Thus, among all provided services and facilities, "Llana Beach Hotel" includes children's swimming pools, mini club, family restaurants and narsery.

With this new tourist complex, SANJOSE counts a total of three luxury resorts at the country, which show the specialisation of the Group in this type of projects and its sound knowledge of the country.

NAVI MUMBAI METRO

SANJOSE has been awarded the execution of all metro stations of Line 1 of Navi Mumbai Metro in Mumbai. Thus, the Consortium led by SANJOSE shall design and build the 11 stations comprising Line 1 of Navi Mumbai Metro.

CIDCO (City & Industrial Development Corporation of Maharashtra), an entity dependent on the Government of the State of Maharashtra, has awarded the design and construction of 10 model stations and a terminal station at the beginning of the line, as well as the design and execution of the rail corridor thereof.

All stations are elevated and constructed on two levels, hall on the first floor and platforms on the second floor. Model stations are 140 m long and 21 m wide. Terminal station of Belapur is 170 m long and 35 m wide and is connected to the train station.

Navi Mumbai is a newly created municipality in the State of Maharashtra. It has a total population over 2 million inhabitants and is located within the metropolitan area of Mumbai, the largest city in India and one of the top largest cities of the world.

The State of Maharashtra has more than 100 million inhabitants and hosts financial centres and the headquarters of major business groups of the country.



Delgado Private Hospital, Lima (Peru)

SANJOSE AMONG THE MOST INTERNATIONAL CONTRACTORS ACCORDING TO AMERICAN MAGAZINE ENR

Grupo SANJOSE has been again honourably included, ranking 177.

This ranking represents a worldwide reference within the construction sector and is the only accepted by governmental authorities of certain countries. Further, in many international tenders it represents a sine qua non requirement in order to pre-qualify.

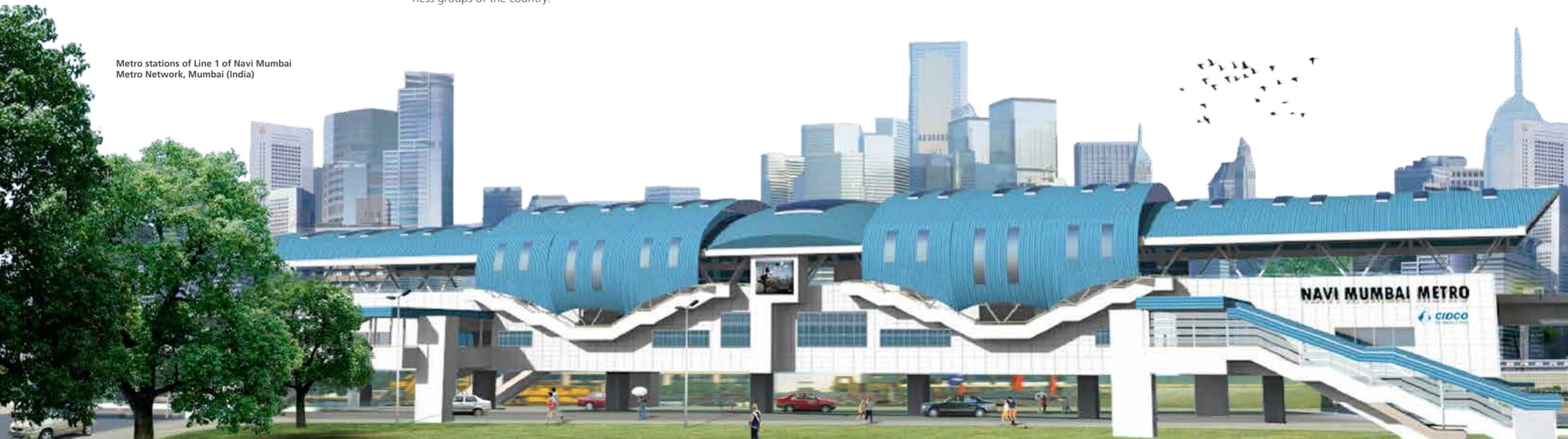
The international strategy of SANJOSE does not go unnoticed by specialised mass media means and thanks to such positioning, new business opportunities at different markets are opening for Grupo SANJOSE.

SANJOSE WILL BUILD A PRESTIGIOUS PRIVATE HOSPITAL IN PERU

Auna has entrusted SANJOSE Perú the construction of the "Delgado Private Hospital", at the district of Miraflores in the capital city Lima. This remarkable health care project will cover a total built surface amounting to 64,000 m² and includes the execution of two towers which will house an inpatient area with a total of 147 beds, a surgery area comprising 7 surgery rooms, an outpatient area and a diagnostic imaging unit.

With the awarding of this project, Grupo SANJOSE consolidates its presence in Peru -country where it operates since 2004- and adds a new hospital project to its wide track record in the healthcare industry.

Metro stations of Line 1 of Navi Mumbai Metro Network, Mumbai (India)





Large-scale project of 100,000 housing units in Mozambique

LARGE-SCALE PROJECT OF 100,000 HOUSING UNITS IN MOZAMBIQUE

The Social Housing Fund (FFH - Fondo para o Fomento de Habitaio), entity dependent on the Ministry of Public Works and Housing of Mozambique, and SANJOSE, after more than a year working together, start the implementation of 100,000 social housing units to be developed over the following ten years along the country. The project has started with the signing of a MOU for the execution of 4,500 housing units to be implemented within the following two years in the provinces of Nampula, Sofala and Maputo.

In Maputo, capital city of the country, a solemn event witnessed the formalisation of the "macro project" of 100, 000 social housing units.

In the presence of the Minister of Public Works and Housing of Mozambique, Mr. Cadmiel Mutemba, and the Chairman of Grupo SANJOSE, Mr. Jacinto Rey, the agreement was signed by the Chairman of the Board of Directors of FFH, Mr. Rui Costa, and the Regional Director for Africa of Grupo SANJOSE, Mr. Pedro Aller.

The Minister of Public Works and Housing, Mr. Cadmiel Mutemba, expressed his satisfaction for the formalisation of the agreement, which is the culmination of an "important process to find a solution for the homeless and to improve the living conditions of the country".

The Chairman of the Board of Directors of FFH, Mr. Rui Costa, stated that the "the agreement is the outcome of a year's work". Project includes not only the construction, but also the development of basic infrastructure, such as: water supply network and drainage system, access roads and public street lighting, health care centres, schools, markets..."

The Chairman of SANJOSE stated that "the main goal of this macro project is to help resolve the housing problems of Mozambique, providing inhabitants with affordable and quality homes". Further, he also emphasised that the project will involve "a complete socioeconomic transformation" of the country. " Over the following ten years wealth will be created; over 20,000 jobs positions; training programmes devoted to boost the specialisation of the country; the economic model of the country will undergo considerable changes with the creation of new factories and auxiliary business (aluminium, wood, glass, etc.) which will transform the production network of Mozambique".

SANJOSE WILL EXECUTE THE ENLARGEMENT WORKS OF THE MOST IMPORTANT AIRPORT OF NEPAL

The Civil Aviation Authority of Nepal (CAAN), entity dependent on the Government of Nepal and equivalent to the Civil Aviation Authority of Spain, has awarded SANJOSE Constructora the enlargement and remodelling of the International Airport of Kathmand (Tribhuvan International Airport -TIA) in Nepal.

The works of SANJOSE will facilitate the flow of passengers and improve quality and safety conditions, allowing the airport to operate 24 hours a day (currently, it is not operative after 12 AM), and enhancing the tourism industry of Nepal, one of the main industries of the economy of the country.

Among the works included within the project, to be financed by the Asian Development Bank (ADB), highlight the extension of the runway, the execution of new taxiways, the enlargement of the apron, a new lighting system of the runway, the restoration and extension of the international terminal building, a new baggage system, several civil works and related works and the provision of certain equipment to the airports of Rara and Simikot.

Therefore, and because the project involves the creation of 500 working posts during the construction process and another 2,000 post after its implementation, Nepal considers this Project of national importance.

UNED BUILDING IN THE SCIENTIFIC AND TECHNOLOGY CAMPUS OF LAS ROZAS, MADRID

The Spanish National University of Distance Education (UNED) has awarded SANJOSE Constructora the execution works of a new building at the Scientific and Technology Campus of Las Rozas.

The building, designed by BASIC AAP (Luis Rojo de Castro and Begoña Fernández-Shaw Zulueta) will cover a total built surface amounting to 11,900 m², among which highlight 2,642 m² devoted to house laboratories and 2,000 m² devoted to house offices.

It will be a remarkable "comb-shaped" building with an outstanding façade consisting of ceramic lattice formed by triangular pieces supported on a metallic structure located at Western and Eastern façades and on the roofing over the building.

Milestones after year-end

During the first months of year 2013, Grupo SANJOSE has been awarded the execution of important international projects, such as:

- Louvre Abu Dhabi Museum (UAE) The design of the Pritzker-prize winning architect Jean Nouvel for the Cultural District of Saadiyat will encompass a total built surface amounting to 64,000 m². With this awarding, SANJOSE has worked on the expansion of the two most important art galleries worldwide: the first experience of the Louvre Museum outside France and the greatest enlargement undertaken in the last 200 years of the Prado Museum of Madrid under the design of the Pritzker-prize winning architect Rafael Moneo.

- New Ministry of Interior Headquarters and the Decentralisation of the Republic of the Congo in Brazzaville. The project will cover a total built surface amounting to 44,000 m² arranged into two buildings, a 10-storey and a 9-storey building, joined by gangways.

- Remodelling and maintenance works for the Ministry of Infrastructure of the Democratic Republic of Timor-Leste of 28.7 km of the road from Dili - Tibar - Liquica. This stretch forms part of the main routes of Timor Leste, it joins the country with Indonesia, and has one of the highest traffic flows of non-urban roads within the country.

- Belaunde Administrative Building, Lima (Peru). Its almost 20,000 m² of surface are located on the corner of Santo Toribio and Victor Andres Belinda, near the Business Centre of San Isidro.

- Highway Rutas Del Loa, Antofagasta (Chile). Concession awarded by the Ministry of Public Works of Chile (MOP) for the construction, repair, conservation and operation for a maximum term of 35 years of this road infrastructure covering a total length of 136.5 km and formed by Route 25 and the new ring road of Calama.

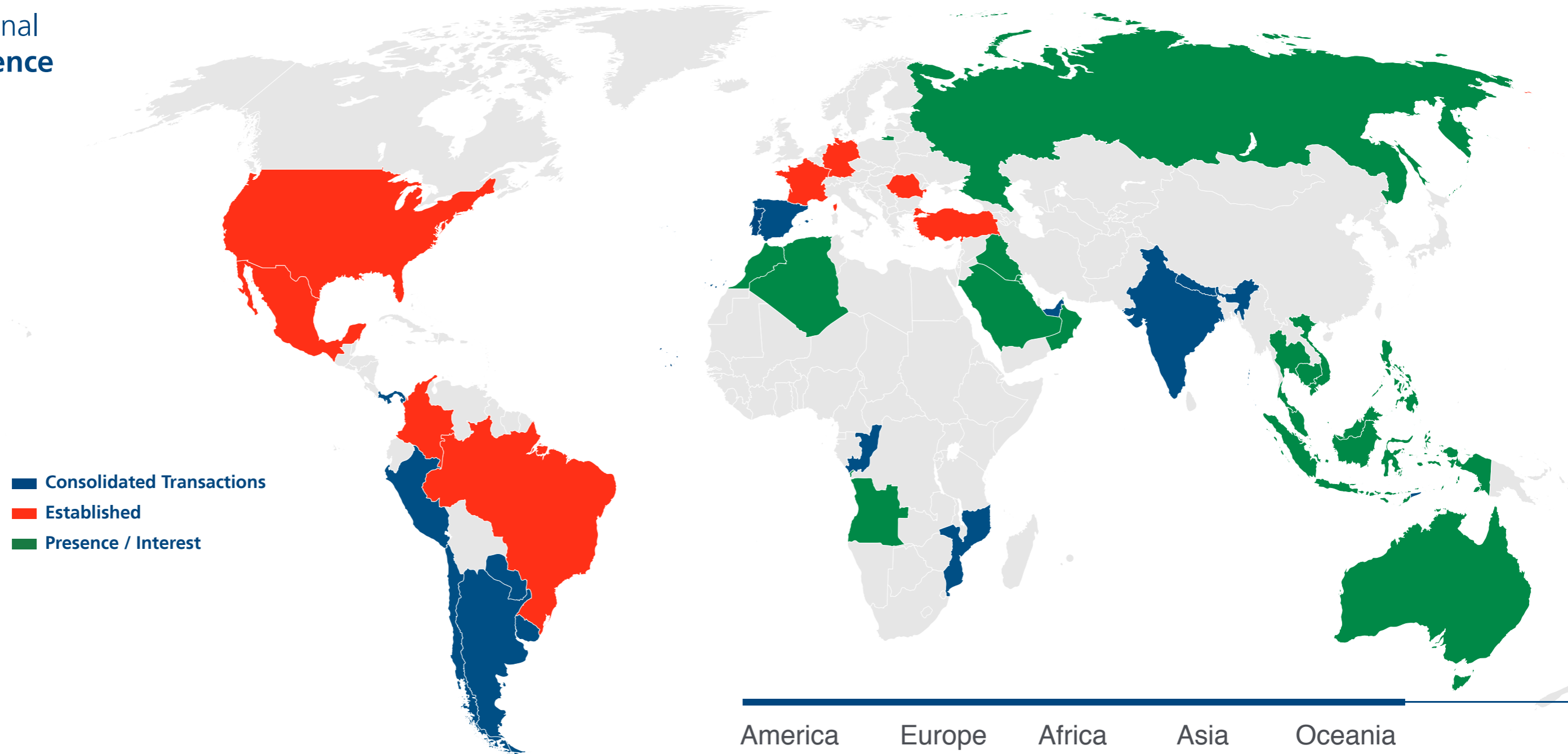


Prado Museum, Madrid (Spain)



Louvre Abu Dhabi Museum (UAE)

International Presence



- Consolidated Transactions
- Established
- Presence / Interest

America

- Argentina
- Chile
- Panama
- Paraguay
- Peru
- Uruguay
- Brazil
- Colombia
- The United States
- Mexico

Europe

- Spain
- Portugal
- Germany
- France
- Romania
- Turkey
- Russia

Africa

- Cape Verde
- Congo
- Mozambique
- Angola
- Algeria
- Morocco

Asia

- UAE
- India
- Nepal
- Timor Leste
- Saudi Arabia
- Cambodia
- Philippines
- Indonesia
- Iraq
- Kuwait
- Malaysia
- Oman
- Singapore
- Thailand
- Vietnam

Oceania

- Australia



Civil works Building Engineering and Industrial Construction Associates

Stretch Miaman - Ponte Ambia.
Spanish High Speed Railway Line AVE Madrid - Galicia (Spain)

CIVIL WORKS

The development of infrastructure capable of improving the welfare of citizens and boosting economic growth worldwide is a challenge for Public Administrations and one of the main commitments of the Group to society.

SANJOSE is one of the top leading companies within the sector due to its vocation to service, innovative character, quality, risk prevention policy, compliance with deadlines and its initiative in facing complex construction challenges and materialising some of the most singular

civil engineering projects, such as certain high speed railway stretches in Spain, the most important airport of Nepal, highways and metro in India or hydraulic works in Argentina.

Main projects

- Metro stations of Line 1 of Navi Mumbai Metro Network, Mumbai, (India). Railways
- Stretch Montcada - Mollet. (Barcelona). Spanish High Speed Railway Line AVE Madrid - Zaragoza - Barcelona - French Border. Railways
- Stretch Cea river - Bercianos del Real Camino (Leon). North-Northwest Spanish High Speed Railway Line. Railways
- Stretch Miaman - Ponte Ambia (Orense). Spanish High Speed Railway Line AVE Madrid - Galicia. Railways
- Stretch Colada de la Buena Vida - Murcia. Spanish High Speed Railway Line AVE Madrid - Levante. Railways
- Stretch Vera - Los Gallardos. Spanish High Speed Railway Line AVE Almeria - Murcia. Railways
- Tunnels of Pajares (complementary civil works South Batch) Spanish High Speed Railway Line AVE Madrid - Asturias. Railways
- Four railway tunnels for Indian Railways (India). Railways
- Highway Rutas del Loa, Antofagasta (Chile). Highways and Roads
- Restoration and maintenance of a 28.7 km long road from Dili - Tibar - Liquica (Timor Leste). Highways and Roads
- Relief road PO-546 from Reguerito to national road PO-11 (Pontevedra). Highways and Roads
- Ring Road Highway of Jaipur (India). Highways and Roads
- Stretch Sueca - Sollana. Doubling of the national road N-332 (Almeria - Valencia). Highways and Roads
- International Airport of Kathmandu - Tribhuvan International Airport (Nepal). Airports
- Flight runway Airport of Alicante Airports
- "La Sionlla" Business Park in Santiago de Compostela, A Coruña. Urbanisation works
- Engineering Central Park of Villaverde, Madrid. Urbanisation works
- Seafront promenade of the Ribera de Algeciras Port, Cadiz. Urbanisation works
- Enlargement and improvement works of the Drinkable Water Treatment Station of Monforte de Lemos, Lugo. Hydraulic works
- Environmental recovery and fitting of the Valdemembra river in Villanueva de la Jara, Cuenca. Hydraulic works
- Irrigation network with recyclable water from the General Supply System of Arroyo Culebro, Madrid. Hydraulic works
- Underwater discharge tunnel in San Cibrao - Cervo, Lugo. Hydraulic works
- Constitución - Medrano Channel, Mendoza (Argentina). Hydraulic works
- Mordenisation and unification of Socavon Channels in San Rafael, Mendoza (Argentina). Hydraulic works



INDIA

METRO STATIONS OF LINE 1 OF NAVI MUMBAI METRO NETWORK, MUMBAI

Design and execution of all metro station of this new metro line: 10 model stations and a terminal station at the beginning of the route which is connected to the intercity train station.

All stations are elevated and constructed on two levels, hall on the first floor and platforms on the second floor. Further, the project includes the design and execution of the rail corridor thereof., passenger access facilities and finishings.

Model stations. 140 m long and 21 m wide.

Terminal station of Belapur. 170 m long and 35 m wide.



The **AVE** in **SPAIN**
(High Speed Railway Network)

STRETCH MONTCADA - MOLLET. (BARCELONA).
SPANISH HIGH SPEED RAILWAY LINE MADRID -
ZARAGOZA - BARCELONA - FRENCH BORDER

Length. 6.126 km.

Viaducts. 2.

Tunnels. 3.

Key project for the connection of Spain and Portugal for the transport of both, passengers and goods.



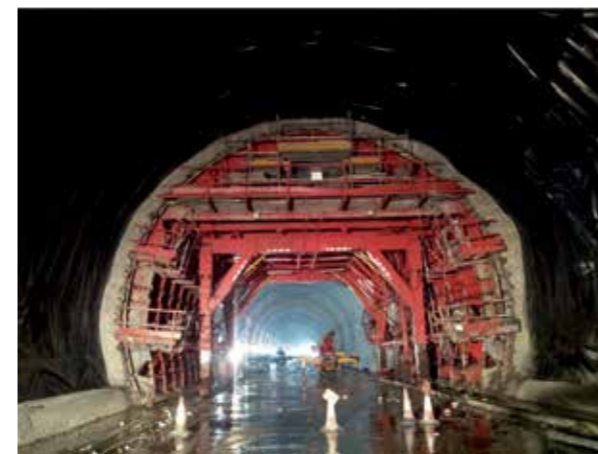
The **AVE** in **SPAIN**
(High Speed Railway Network)

STRETCH MIAMAN - PONTE AMBIA (ORENSE).
SPANISH HIGH SPEED RAILWAY LINE MADRID - GALICIA

Length. 6.7 Km.

Viaducts. 3 (Miaman 177 m, Bouzas 216 m and Arnoia 799 m).
Highlighting the latter for having 55 m spans and a 110 m
central span at a depressed arch.

852 m long tunnel.



The **AVE** in **SPAIN**
(High Speed Railway Network)

TUNNELS OF PAJARES. SPANISH HIGH SPEED RAILWAY LINE MADRID - ASTURIAS

Piping length. 9.79 km.

Inside diameter. 8.50 m.

Waterproofing works and execution of an independent drainage system.

Execution of a separate drainage system for waste and infiltration water.

With a total length of 25 km, the Tunnels of Pajares shall be the second longest tunnels in Spain and the seventh longest tunnels worldwide.

They shall allow the passage through the Cantabrian Mountains, reducing current route from 83 km to 50 km.



Stretch Cea river - Bercianos del Real Camino (Leon). North-Northwest Spanish High Speed Railway Line

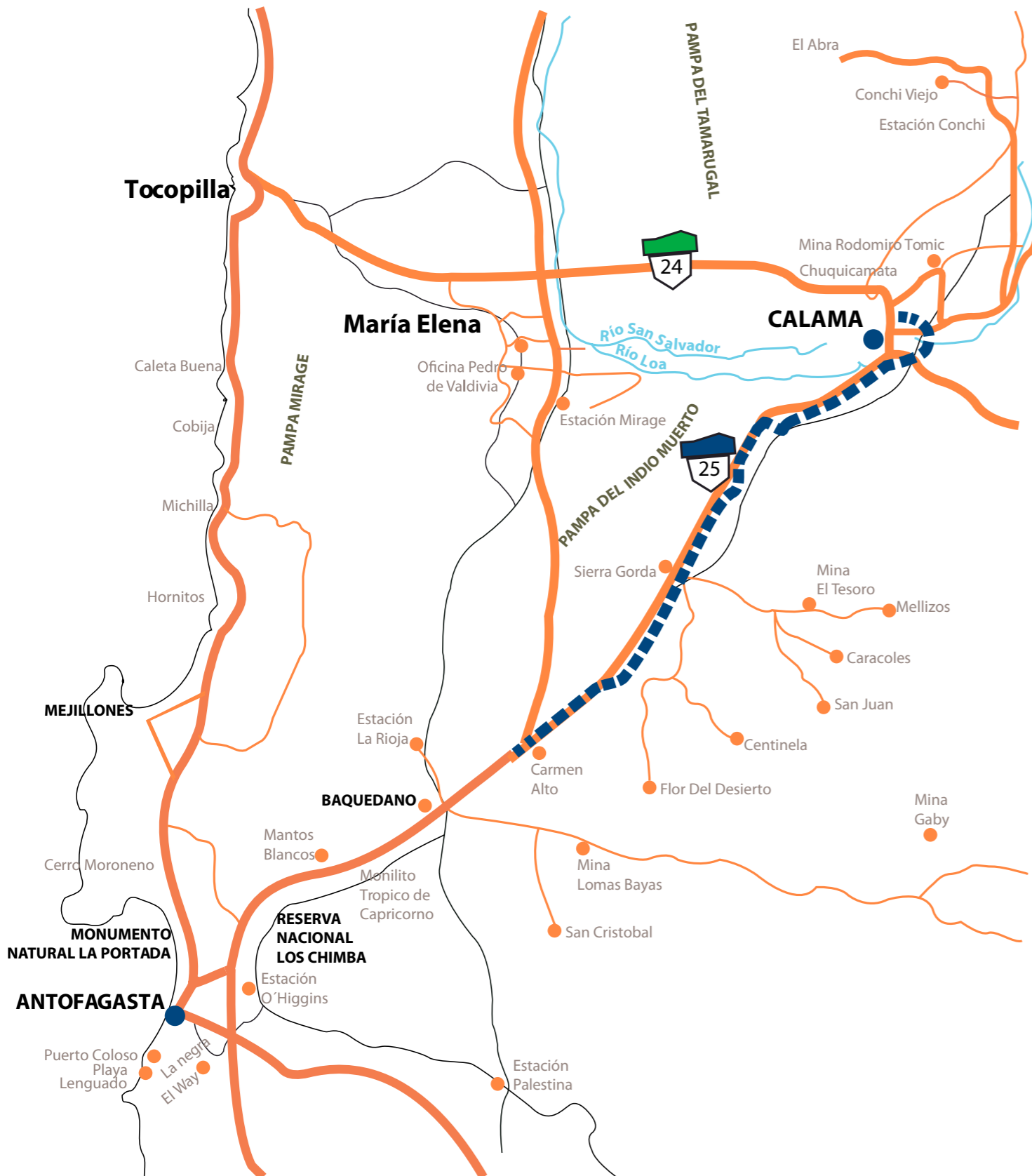


Stretch Colada de la Buena Vida - Murcia.
Spanish High Speed Railway Line AVE Madrid - Levante



Stretch Vera - Los Gallardos.
Spanish High Speed Railway Line AVE Almeria - Murcia





CHILE

HIGHWAY RUTAS DEL LOA, ANTOFAGASTA

Concession for the construction, repair, conservation and operation for a maximum period of 35 years.

With a total length of 136.5 km, the concession consists of Route 25 and the new ring road of Calama, allowing traffic connection from this mining area of the country to Route 5, which crosses the Andean country from north to south.

Route 25 will become a double lane road and will be continued on the new Eastern link of this important mining city, which involves a 25.5 km long additional single carriageway road.

The project includes service roads, a link road to Sierra Gorda, several intersections, flyovers, a toll station, an emergency service area, pedestrian ways, as well as drainage, signalling and road safety works.



TIMOR LESTE

RESTORATION AND MAINTENANCE OF THE ROAD DILI - TIBAR - LIQUIÇA

Length. 28.7 km.

Works shall start at kilometre point 6.8 of the existing road (at the outskirts of the capital city Dili), which has one of the highest traffic flows of non-urban roads within the country and constitutes one of the most important communication routes linking Timor Leste with Indonesia.

The existing road has a width of 4 meters and the new route will ensure a minimum width of 6 meters arranged into two lanes (one in each direction) plus two shoulders of 1 meter each.

The concerning road is a coastal route between the sea and rock formations with steep gradients. The existing road has slope stability problems in several locations which require different and various actions throughout its entire path.



INDIA

RING ROAD HIGHWAY OF JAIPUR, STATE OF RAJASTHAN

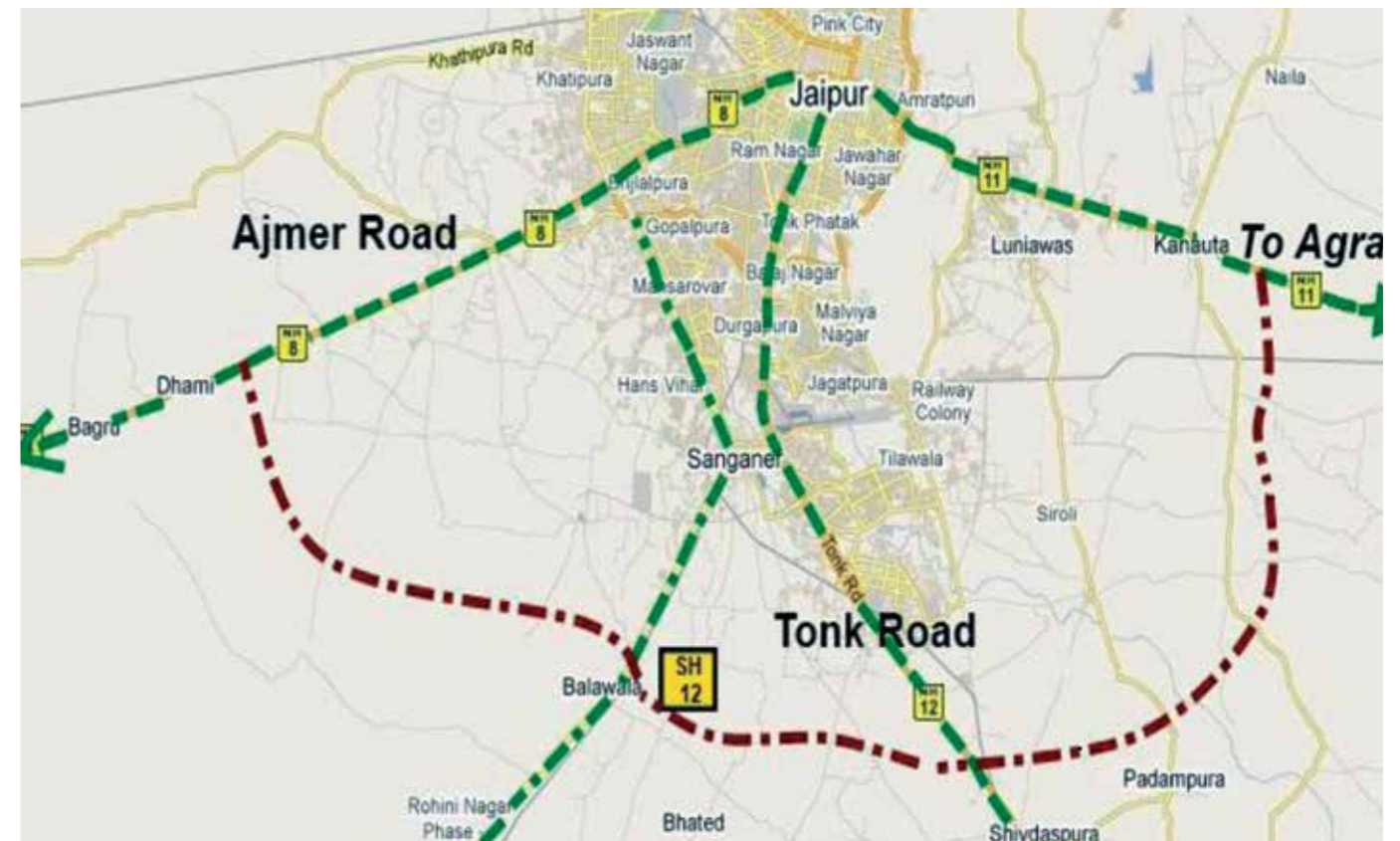
Execution and concession for a period of 28 years of this new toll base ring road of Jaipur which shall improve connections to the city and to other roads, such as NH-8 (Delhi Road), NH-11 (Agra Road), NH-12 (Tonk Road) y SH-12 (Malpura Road) by the execution of flyovers.

Length. 47 km.

Toll stations. 2.

Structures. 36.

Among works comprising the complete project, highlight the earthworks and road surface: 4,500,000 m³ of embankment, 489,600 T of bituminous mixture, 320,000 m² of reinforced earth, 18,540 ml. of piles, etc.



SPAIN

ALTERNATIVE ROAD TO PO-546 BETWEEN REGUERITO AND THE REGIONAL ROAD PO-11, PONTEVEDRA

Length. 4.4 km.
Viaducts. 3.
Underpasses. 3.
Flyovers. 1.
It provides a solution to the ring road of Marin.



STRETCH SUECA - SOLLANA. DOUBLING OF NATIONAL ROAD N-332, ALMERIA - VALENCIA

Length. 8.2 km.
Viaducts. 11.
Junctions. 1.
This highway runs through the Valencian Albufera, so its design has been executed taking into consideration seasonal flooding.

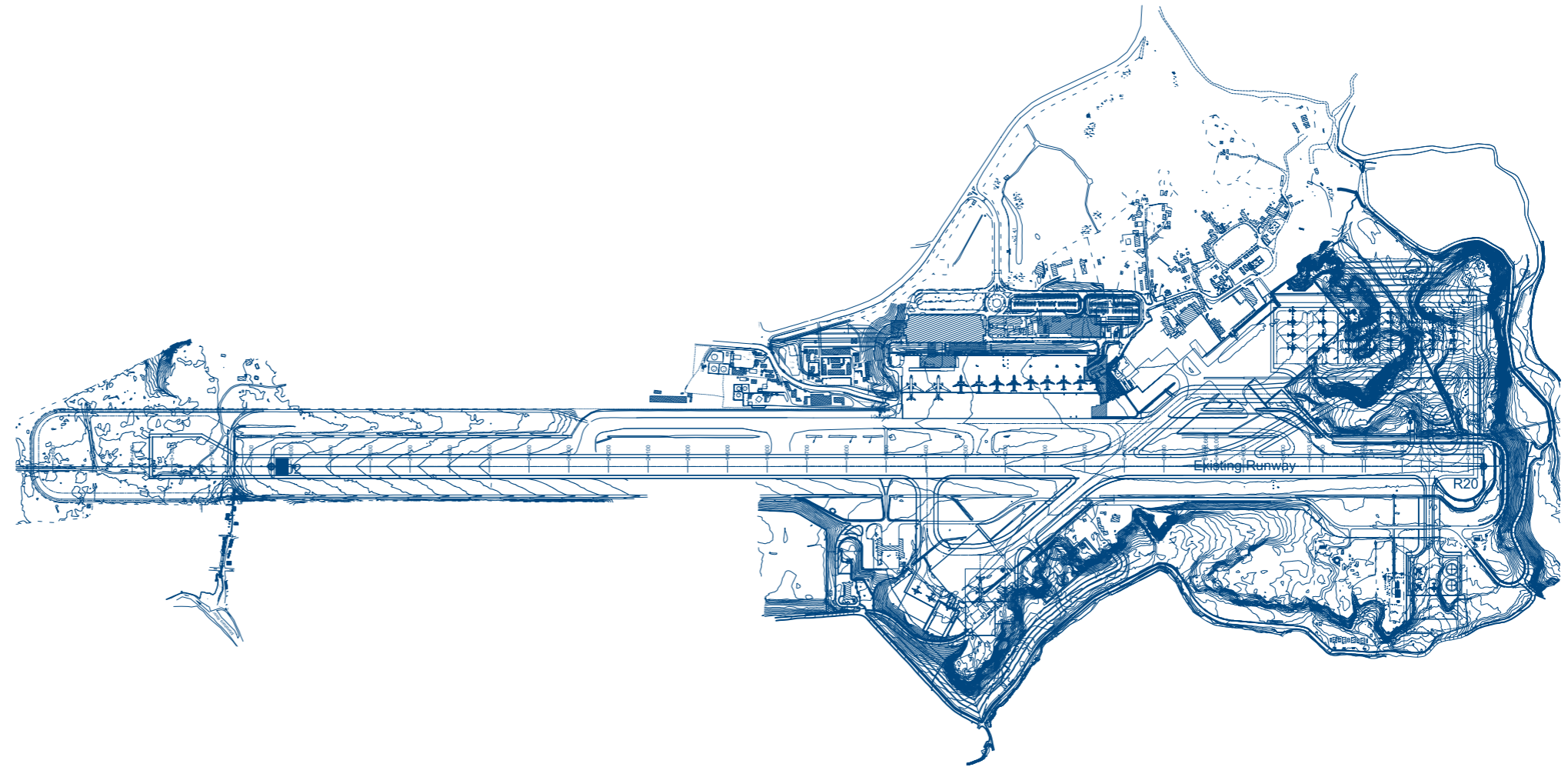


NEPAL

INTERNATIONAL AIRPORT OF KATHMANDU

Enlargement and remodelling of the most important airport of Nepal which shall facilitate the flow of passengers and improve quality and safety conditions, allowing the airport to operate 24 hours a day (currently, it is not operative after 12 AM).

Among works included within the project, to be financed by the Asian Development Bank (ADB), highlight the extension of the runway, the execution of new taxiways, the enlargement of the apron, a new lighting system of the runway, the restoration and extension of the international terminal building, a new baggage system, several civil works and related works and the provision of certain equipment to the airports of Rara and Simikot. Nepal considers this project a flagship project.



Flight Runway of the Airport of Alicante



Works at night time at the Flight Runway of the Airport of Alicante



SPAIN

FLIGHT RUNWAY OF THE AIRPORT OF ALICANTE

Milling and agglomeration of the runway so as to adapt cross slopes to applicable regulations in force. Demolition and execution of a new fast track.

Dismantling and assembly of new traffic guidance equipment: traffic beacon, wiring...

Works have been executed at night time so as to not interfere with daily airport activities.

SPAIN

"La Sionlla" Business Park in Santiago de Compostela, A Coruña



Engineering Central Park of Villaverde, Madrid



Underwater discharge tunnel in San Cibrao - Cervo, Lugo



ARGENTINA

Constitución - Medrano Channel, Mendoza (24 km)



Mordenisation and unification of Socavon Channels in San Rafael, Mendoza (44 km)



BUILDING

The opening or awarding of singular buildings due to their magnitude, history, complex technical nature or social relevance worldwide makes SANJOSE Constructora a reference within the sector.

Despite the current complex economic situation and the construction sector meltdown, the expertise of SANJOSE, its capacity of management and optimi-

sation of resources make it a well know reference for the execution of health care centres, educational centres, culture and sport facilities, administrative buildings, hotels, residential projects, leisure and entertainment centres... as many needs and possibilities as clients and users.

For all of them, SANJOSE relies on a solid expertise and portfolio of projects which provide clients with a knowledge

and value highly appreciated whenever delivering so special projects as the first hospitals under concession regime in Chile, several 5* resorts in Cape Verde, urban developments in Mozambique or the execution of the Louvre Abu Dhabi Museum - first branch of the most prestigious museum outside France.

Main HEALTH CARE projects

University Central Hospital of Asturias (HUCA)

Hospital of Gandia

University Hospital Complex of Albacete (CHUA)

IMG Zorrotzaurre Hospital, Bilbao

El Carmen Dr. Luis Valentin Ferrada Hospital, Maipu. - Santiago de Chile

La Florida Dr. Eloísa Díaz Insunza Metropolitan Hospital, Santiago de Chile

Dr. Guillermo Rawson Hospital, San Juan (Argentina)

Northern Rehabilitation centre, Valadares - Oporto (Portugal)

Delgado Private Hospital, Lima (Peru)

Dr. Guillermo Rawson Hospital, San Juan (Argentina)



CHILE

LA FLORIDA DR. ELOÍSA DÍAZ INSUNZA METROPOLITAN HOSPITAL, SANTIAGO DE CHILE

Surface plot of land. 14,700 m².

Built surface. 71,987 m².

Hospital surface. 44,126 m².

Total beds. 391.

Intensive care units. 60.

Surgery rooms. 17.

Car park spaces. 579.

Architects. BBATS Consulting & Projects, SLP.

First hospital of the country (together with the Hospital of Maipu) to incorporate green roofs.





CHILE

EL CARMEN DR. LUIS VALENTIN FERRADA HOSPITAL, MAIPU - SANTIAGO DE CHILE

Surface plot of land. 50,619 m².

Built surface. 70,646 m².

Hospital surface. 42,994 m².

Total beds. 375.

Intensive care units. 30.

Surgery rooms. 17.

Car park spaces. 528.

Architects. BBATS Consulting & Projects, SLP.

First hospital of the country (together with the Hospital of La Florida) to incorporate green roofs.

Project awarded by Constest AADAIH – Domus 2009 for its contribution to environmental, social and economic sustainability within the health care sector.



PERU

DELGADO PRIVATE HOSPITAL, LIMA

Surface plot of land. 8,211 m².

Built surface. 65,438 m².

Hospital surface. 43,500 m².

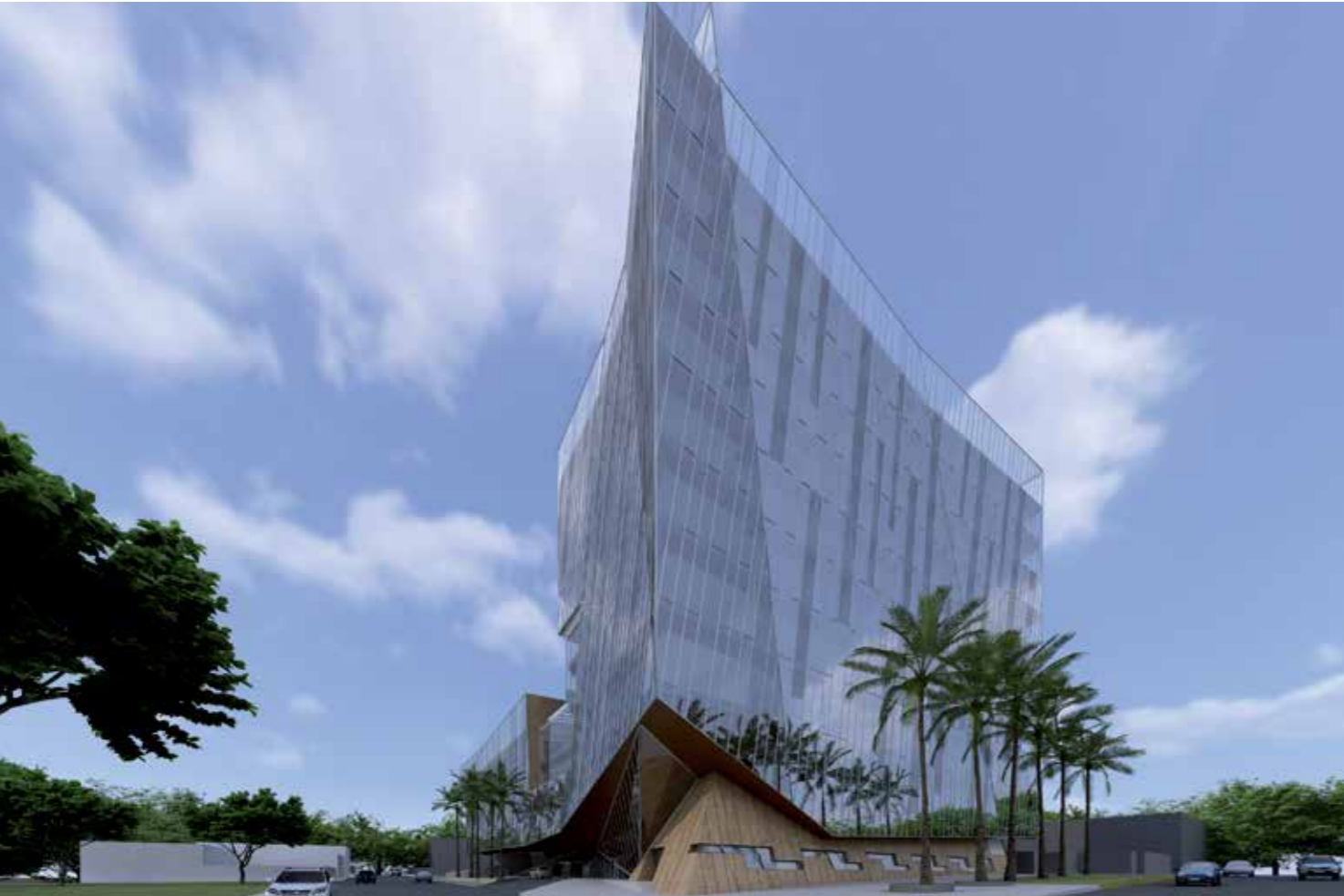
Total beds. 144.

Intensive care units. 15 + 8 for new born.

Surgery rooms. 6.

Other remarkable facilities. Linear accelerator and brachytherapy

Car park spaces. 790.



PORTUGAL

NORTHERN REHABILITATION CENTRE IN VALADARES, VILANOVA DE GAIA - OPORTO

Hospital complex formed by three buildings devoted to physical rehabilitation treatment for the north area of Portugal.

Surface plot of land. 49,965 m².

Hospital surface. 24,946 m².

Total beds. 114.

Car park spaces. 289.

Gardening surface. 14,280 m², of which 3,480 m² correspond to inside courtyards and garden roofs and 10,800 m² correspond to surrounding gardens.

Architect. Aidhos.



SPAIN

CENTRAL UNIVERSITY HOSPITAL OF ASTURIAS (HUCA), OVIEDO

Surface plot of land. 365,000 m².

Built surface. 290,041 m².

Hospital surface. 180,603 m².

Total beds. 1,039.

Intensive care units. 121.

Surgery rooms. 33.

Car park spaces. 2,045.

Architect. Ángel Fernández Alba and Juan Navarro Baldeweg.



IMQ ZORROTZAURRE HOSPITAL, BILBAO

Surface plot of land. 9,200 m².

Built surface. 43,839 m².

Hospital surface. 25,466 m².

Total beds. 157.

Intensive care units. 14.

Surgery rooms. 9.

Car park spaces. 450.

Architect. Carlos Ferrater and Alfonso Casares.



Main EDUCATION AND CULTURE projects

Headquarters of Maimonides. Institute for Biomedical Research (IMIBIC) of the University of Cordoba. Education
 Building for Knowledge Transfer and General Services of the University of Jaen. Education
 UNED (Spanish National University of Distance Education), Scientific and Technology Campus of Las Rozas - Madrid. Education
 Building for the University Promotion of Applied Research Centres (LUCIA), University of Valladolid. Education
 Design and construction of the Military Academy Leoncio Prado, La Perla - Callao (Peru). Education
 Residential development for official of the Argentine Army, Buenos Aires (Argentina). Education
 Enlargement of the Biomedical Research Centre of the University of Granada. Education
 Enlargement and remodelling of the Secondary Educational Centre of Gondomar, Oporto (Portugal). Education
 Louvre Abu Dhabi Museum (UAE) Culture
 Restoration of the Municipal Theatre of Born, Ciudadela - Menorca. Culture
 Restoration of the Real Theatre of Ezcaray, La Rioja. Culture
 Space of the Telefónica Foundation at Gran Via, 28, Madrid. Culture
 Mobile World Centre Movistar, Barcelona. Culture
 "Ateneu Nou Barris" Cultural Centre, Barcelona. Culture
 Restoration of the Palacio de la Inquisición, Casas Pintadas y Patio de San Miguel de Évora (Portugal). Culture
 Central Services of the City of Culture, Santiago de Compostela. Culture

Restoration of the Palacio de la Inquisición, Casas Pintadas y Patio de San Miguel de Évora (Portugal)



SPAIN

SPACE OF THE TELEFÓNICA FOUNDATION AT GRAN VIA 28, MADRID

Built surface. 6,500 m² (ground floor, second, third and fourth floor of the 13-storey remarkable building).

Lobby and store 900 m².

Offices. 400 m².

Museum / showroom. 4,195 m².

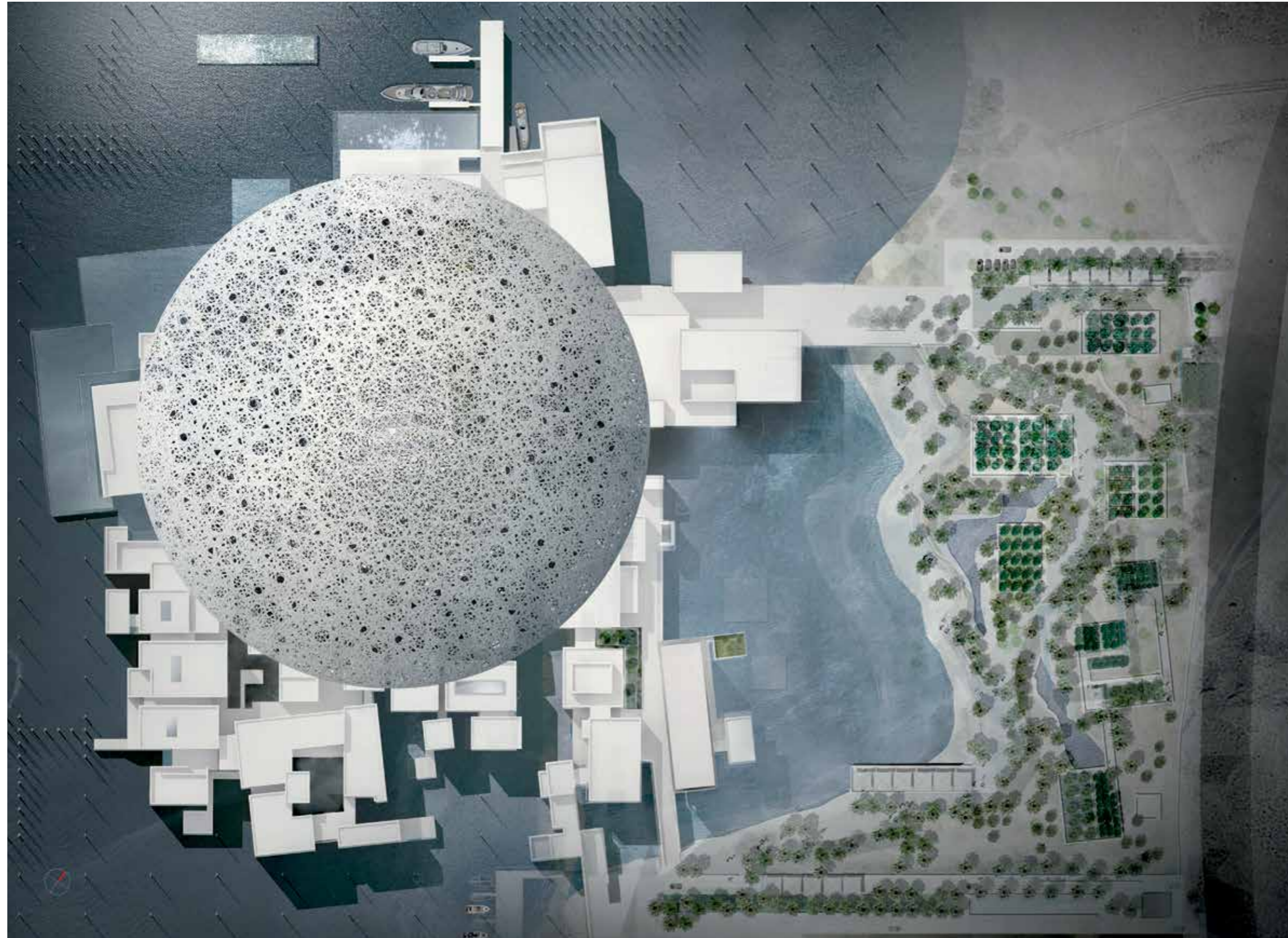
Auditorium foyer / hall. 1,000 m².

Circular staircase which joins the concerned floors and may be considered as the first sculpture of the museum.

The structure of the staircase consists of a double metal lattice in cross shape, which supports the circular stair itself as it climbs up and develops an helix.

Architect. Miguel Ángel García Alonso (Quanto Arquitectura) and Belén Moneo (Moneo-Brock Studio).





UNITED ARAB EMIRATES

LOUVRE ABU DHABI MUSEUM

Museum complex located at the Cultural District of Saadiyat and formed by pavilions, plazas, alleyways and canals which evoke the image of a city floating on the sea, inspired by the traditional Arabic architecture. Special attention should be paid to a 180 m diameter dome (which seems to be suspended in mid air) consisting of interlaced patterns which develop a mashrabiya giving rise to a rain of light that floods into the museum.

Built surface. 64,000 m².

Buildings. 30.

Art galleries. 9,200 m².

Architect. Jean Nouvel.

First branch of the Louvre Museum outside France.



PERU

DESIGN AND EXECUTION OF THE NEW MILITARY ACADEMY LEONCIO PRADO, LA PERLA - CALLAO

The original educational complex was inaugurated in 1943 and acknowledged "Emblematic Academy of Peru" in 2009.

Restoration of the two existing buildings and execution of the new complex.

Built surface. 25,500 m².

Urbanisation. 100,000 m².

New buildings. 15.

Hall of residence. 1,050 students.

Auditorium. 1,200 seats.

Architect. SANJOSE Perú



PORTUGAL

ENLARGEMENT AND REMODELLING OF THE SECONDARY EDUCATIONAL CENTRE OF GONDOMAR, OPORTO

Built surface. 17,977 m².

New buildings. 3.

Refitted buildings. 3.

Classrooms. 2,802 m²

Offices. 5 (861 m²).

Laboratories. 11 (1,149 m²).

Meeting halls. 24 (738 m²).

Special halls. 14 (444 m²).

Library. 290 m².

Auditorium. 120 seats (121 m²).

Sport facilities. 3,021 m².

Green areas and gardens. 3,270 m².

Restaurant and cafeteria. 370 m².

Car park spaces. 75.

Architect. Carlos Prata.



Other REMARKABLE buildings

- Ministry of Home Affairs and Decentralisation of the Republic of Congo, Brazzaville. Administrative building
- Restoration of the Building for Central Services of Novagalicia Banco, Vigo. Administrative building
- Headquarters of Neuron Biopharma, Technology Park of Granada. Administrative building
- Headquarters of Docalia, Alcobendas - Madrid. Administrative building
- Judicial Headquarters of Linares, Jaen. Administrative building
- Administrative Building Av. Liberdade 225, Lisbon (Portugal). Administrative building
- Víctor Andrés Belaunde Administrative Building in San Isidro, Lima (Peru). Administrative building
- Castellana 200, Madrid Offices / Shopping Centre
- La Zenia Shopping Centre, Orihuela - Alicante. Shopping Centre
- Ikea of Telde, Las Palmas de Gran Canaria. Shopping Centre
- Holea Shopping Centre, Huelva. Shopping Centre
- Enlargement of Las Glories Shopping Centre, Barcelona. Shopping Centre
- As Cancelas Shopping Centre, Santiago de Compostela. Shopping Centre
- Enlargement of the Terminal Building of the Airport of Vigo. Transport Infrastructure
- Residence hall of the professional and farm team of the Real Madrid at the Sports City of Valdebebas, Madrid. Sport facilities
- Sport complex of San Moix, Palma de Mallorca. Sport facilities
- Enlargement of the Swimming Club of Sabadell, Barcelona. Sport facilities
- La Aldehuela Sports Centre, Salamanca. Sport facilities
- Sevilla Este Sports Centre. Sport facilities
- Virgin Active Gym at Alcal Shopping Centre, Magna, Alcala de Henares. Sport facilities

Enlargement of the Swimming Club of Sabadell, Barcelona (Spain)



REPUBLIC OF CONGO

MINISTRY OF INTERIOR AND DECENTRALISATION OF THE REPUBLIC OF CONGO, BRAZZAVILLE

The project covers a total built surface amounting to 44,000 m² arranged into two buildings (a 10-storey building and a 9-storey building) joined by gangways, an helipad on the roof and a common basement, 111 car park spaces and technical and monitoring facilities.

Each building houses different departments of the Ministry arranged into several floors, a Conference Hall, a cafeteria located at the ground level floor and a restaurant at the fourth floor. Top level floors are devoted to house the Minister's office and private apartments.

The project also includes the urbanisation works of the plot of land (4,407 m²), the construction of a perimeter wall and security gate houses.



SPAIN

ENLARGEMENT OF THE TERMINAL BUILDING OF THE AIRPORT OF VIGO

Remodelling of the existing terminal building and enlargement in more than 17,000 m², increasing total surface built from 8,700 m² to 26,000 m².

The tripling of the total surface of the Terminal Building allows the Airport of Vigo to increase total capacity to four million passengers per year.

Underground Level Floor. Devoted to baggage control, as well as storage and facilities.

This level is connected to the new parking area.

Ground Level Floor. Check-in (23 desks), security screening, baggage claim, arrivals, shopping area and authority post.

First Floor. Departures. A total of four boarding gateways (two more than at present days) of which two are remote boarding gates.

Second Floor. Located at the deck, it houses the Office of Operations and the Weather Forecast Department, as well as facilities.

Works were executed without interfering with normal daily activity of the airport.

Architect. César Portela.



RESTORATION OF THE BUILDING FOR CENTRAL SERVICES OF NOVAGALICIA BANCO, VIGO

Surface plot of land. 2,500 m².

Built surface. 34,500 m².

Exterior. "Skin" restoration of the building by cleaning exterior façades and replacing existing aluminium carpentry, improving external image and interior comfort. Demolition and replacement of the roofing by a new structure which recalls the waves of the sea and includes a central skylight covering the internal patio.

Interior. Demolition of the four façades of the internal patio and execution of diaphragm walls instead. Assembly of panoramic hydraulic lifts (with a 37 m route, the longest in Spain), which provide vertical communication among floors through several passageways. Interior distribution has been completely remodelled improving use of spaces, creating spaces devoted to host events and lectures, such as the auditorium and meeting hall, new offices, records, working area, common spaces, technical divisions and stair cases.

All works have been performed without interfering with normal daily activity of the Bank.

Architect. Alberto de Cominges Molíns and Pedro de la Puente Crespo.



SPAIN

LA ZENIA BOULEVARD SHOPPING CENTRE, ORIHUELA, ALICANTE

Surface plot of land. 175,000 m².

Built surface. 175,000 m².

Built surface. 80,500 m².

Restaurants / Cafeterias. 9,000 m².

Children's playground 1,900 m².

Car park spaces. 4,500.

Engineer. Javier Díez Torrijos (Díez Cisneros).



CASTELLANA 200, MADRID

Built surface. 60,032 m².

Office surface. 21,532 m².

Commercial surface. 8,454 m².

Spa. 760 m².

Car park spaces. 829 (4 underground level floors).

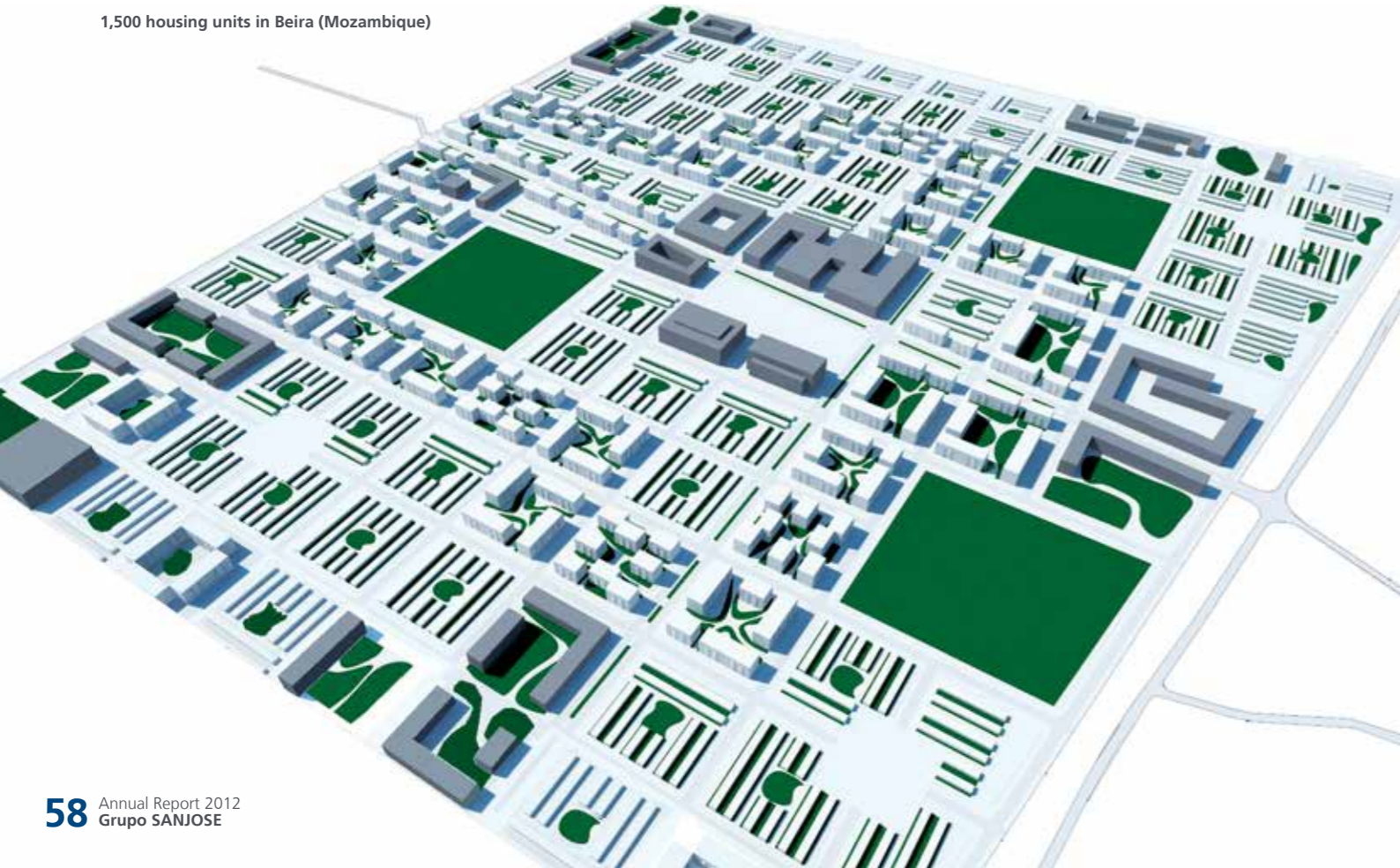
Architect. Emilio Dahl Sáenz de Santa María and Fernando Antolín García.



Main RESIDENTIAL Projects

- Condominium Parques de la Huaca -3,072 housing units-, Lima (Peru)
- 100,000 social housing units in Mozambique
- Housing units at Cuesta Piedra, Santa Cruz de Tenerife
- Social homes at Torrente, Valencia
- Housing units and urbanisation works at Fuengirola, Malaga
- Nuredduna Residential Development, Palma de Mallorca
- Social homes at Parc Central de Sabadell, Barcelona
- Housing units at Salustiano Olózaga (Salamanca District), Madrid
- Boavista Gardens Residential Development, Oporto (Portugal)
- Social homes at Achada Grande de Trás, Praia Santiago (Cape Verde)
- Social homes at Espargos, Salt Island (Cape Verde)
- 5* Dunas Beach Resort & Spa, Salt Island (Cape Verde)
- 5* Llana Beach Hotel, Salt Island (Cape Verde)

1,500 housing units in Beira (Mozambique)



1,500 housing units in Maputo (Mozambique)



MOZAMBIQUE

LARGE-SCALE PROJECT OF 100,000 HOUSING UNITS IN MOZAMBIQUE

MOU entered with the Government of Mozambique for the development of 100,000 social housing units throughout the country during the following ten years.

Works also include, apart from the implementation of housing units, the development of basic infrastructure (water supply network and drainage system, roads access and public lighting) and consider land reserves for future social equipment, such as health care centres, schools, shopping centres...

The large-scale project has been started with the following developments:

- 1,500 housing units in Nampula.
- 1,500 housing units in Beira.
- 1,500 housing units in Maputo.



CAPE VERDE

5* DUNAS BEACH RESORT & SPA, SALT ISLAND

Surface plot of land. 175,467 m².
 Built surface (residential). 107,067 m².
 Built surface (roads and access ways). 37,003 m².
 Villas. 56.
 Homes, apartments and studios. 1,031.
 Hotel. 164 rooms.
 Communal swimming pools. 9 (4,200 m²).
 Private swimming pools. 56.
 Amphitheatre. 600 seats (1,011 m²).
 Restaurants. 7.
 Stores. 20.
 Spa. 1,240 m².
 Gym. 95 m².
 Car park spaces. 81.
 Architect. SANJOSE Constructora.



ENGINEERING AND INDUSTRIAL CONSTRUCTION

SANJOSE Ingeniería y Construcción Industrial provides its technological capacity and experience for more than 30 years within the sector to the development of new energy infrastructure and avant-garde facilities which improve productivity, boost efficiency, optimise resources and promote sustainability.

SANJOSE offers all kind of services within this highly specialised market. From complete execution of projects under EPC regime (Engineering, Procurement & Construction) to advice or assistance for the development of any stage within a project of this kind.

SANJOSE counts on important references of several clients, including, yet no limited to, airports, hospitals and first level international corporations such as Volkswagen, Telefónica, Iberdrola, IBM, etc.

Main projects

Volkswagen Premises of Pamplona, Navarra. Facilities and Assembly

TIER II Data Centre of IBM in La Molina, Lima (Peru). Facilities and Assembly

Headquarters of Docalia, Alcobendas - Madrid. Facilities and Assembly

Iberdrola Tower, Bilbao. Facilities and Assembly

University Central Hospital of Asturias (HUCA), Oviedo Facilities and Assembly

IMG Zorrotzaurre Hospital, Bilbao Facilities and Assembly

Electrical works "A Sionlla" Business Park, Santiago de Compostela. Facilities and Assembly

Electrical power station of the Airport of Santiago de Compostela. Transport Infrastructure

Electrical works of the Terminal Building of the Airport of Vigo. Infrastructure and Transport

Beaconing of aviation area of the Airport of Huesca. Infrastructure and Transport

Generators and connection to the Terminal Building of the Airport of Bilbao. Infrastructure and Transport

Technical assistance for Telefónica, Vodafone and R. Infrastructure and Transport

9 MW PV solar plant in Ablitas, Navarra Energy

20 MW PV solar plant in Alto de la Alianza, Tacna (Peru) Energy

El Pozo Factory in Alhama de Murcia. Factory

Iberdrola Tower, Bilbao (Spain)



SPAIN

ELECTRICAL POWER STATION OF THE AIRPORT OF SANTIAGO DE COMPOSTELA

Construction and equipment of the new power station which shall provide enough power capacity so as to satisfy future potential enlargement works of the airport and ensure reliability of the service.

Built surface. 6,000 m².

Transformation centres. 10, with power over 10 MVA.

It counts on three generators of 2.5 MVA each and provides 20 KW and 3 KW by changing the interior distribution of current and new rings.

Power of new transformers installed. 7,860 KVA.

Power of emergency units installed. 7,500 KVA.

Power of continuity groups installed. 1,400 KVA.



PERU

20 MW PV SOLAR PLANT IN ALTO DE LA ALIANZA, TACNA (DESERT SOUTH OF PERU)

Plant with a polar axis tracker and connected to the national interconnected system (SEIN) expected to produce 45 GWh per year and supply energy to 36,000 homes due to its privileged location in an area of intense solar radiation.

Surface plot of land. 117,000 m².

Built surface. 60,000 m².

Solar panels. 80,000.

10,440 meters of main and secondary roads.

Perimeter fence. 4,430 meters of a 2 meter- high PVC-coated mesh.

18,000 micro -piles of 350 mm. diameter and 3,100 mm. depth.

Assembly of 1,850,000 Kg of metallic structure, including pillars, beams and transmission axis.

It will be the first PV solar farm connected to the national power system of Peru.



Associates



An Andalusian company with branches in Seville and Malaga and with more than 20 years of experience in both public and private projects having executed projects in the 8 provinces of Andalusia. Cartuja is specialised in the construction and restoration of buildings: administrative buildings, hotels, shopping centres, hospitals and health care centres, housing units, educational centres and sport facilities, etc.



220 Social homes at the neighbourhood "Nuevo Amate", Seville.



A Basque company with its headquarters in Vitoria and a renowned working life both in the public and private sector of the Basque Country and Navarra, where it has successfully executed all kind of construction projects: hotels, administrative buildings, schools, residences, health care centres, sport facilities, emblematic restoration works, etc.



Music School and Culture Hall "Kultur Etxea" of Hondarribia, Guipuzcoa



A Portuguese company based in Lisbon and devoted to the construction, restoration, extension and remodelling of all types of buildings (residential and non-residential) of both, unique and high technical complexity projects and rapid intervention projects. Its specialisation, flexibility and adaptation to customers' needs have helped to overcome the complex economic situation of Portugal, be awarded new projects in Cape Verde and keep turnover, procurement and execution figures.



Main projects CARTUJA

- 220 Social homes in the neighbourhood "Nuevo Amate", Seville
- Remodelling of the Library and Auditorium of the Faculty of Philosophy of the University of Cordoba
- C2 Huerta del Prado, Marbella
- Restoration and remodelling of the Ahlzahir, School, Cordoba
- 91 Social homes in Camas, Sevilla
- Social Services Centre Tres Barrios Amate, Sevilla

Main projects EBA

- Table Tennis Sport High Performance Centre of Irun, Guipuzcoa
- Music School and Culture Hall "Kultur Etxea" of Hondarribia, Guipuzcoa
- Green Hall of the Europe Palace of Vitoria, Alava
- 84 Social homes in Vitoria, Alava
- Restoration of the Central Library of the Basque Country University in the Leioa Campus, Vizcaya

SPAIN

PORTUGAL

Main projects CONSTRUCTORA UDRA

- Boutique Lanidor Hotel, Lisbon
- 4* Portugal Hotel, Lisbon
- Residential building at Rua da Cruz de St. Apolônia, Lisbon
- LIDL Laranjeiras Shopping Centre, Lisbon
- Sports Centre of Sines, Alentejo
- Remodelling of the "Reception Building" of the pedestrian way to S. George Castle, Lisbon
- JDeus Factory in Samora Correia, Benavente
- Technical facilities of the Training Centre on Renewable Energy in Santiago Island (Cape Verde)

Residential building at Rua da Cruz de St. Apolônia, Lisbon



Urban Developments Property Residential Development

URBAN DEVELOPMENTS

SANJOSE Inmobiliaria, as promoter of great domestic and international urban developments, provides innovative solutions to population growth and effectively responds to the needs of new infrastructure of important cities such as, Madrid, Seville, Buenos Aires or Lima.

Aware of the importance of each project to boost the economic growth and the development of the areas of action, SANJOSE provides all its experience to implement sustainable spaces, integrated into the environment and capable of responding to the demands and needs of

society in terms of quality, service, aesthetics, and functionality, etc.

Main projects

- Extension of the Castellana, Madrid (Spain)
- Urban transformation of La Matanza-Buenos Aires (Argentina)
- Condominium Parques de la Huaca, Lima (Peru)

ARGENTINA

URBAN TRANSFORMATION OF LA MATANZA, BUENOS AIRES

- Surface plot of land. 1,000,000 m².
- Built surface. 1,200,000 m².
- Free surface. 480,000 m².
- Towers. 14.
- Number of housing units. 15,000.
- Blocks. 50.
- Parking area. 375,000 m².
- Architect. GSJ Solutions.



PERU

CONDOMINIO PARQUES DE LA HUACA, LIMA

- Surface plot of land. 101,190 m².
- Living area. 74,518 m².
- Roads surface. 15,271 m².
- Leisure and entertainment surface. 7,803 m².
- Huaca (archaeological remains) area. 3,651 m².
- Number of housing units. 3,072.
- Condominiums. 3 independent.
- Buildings. 64.
- Car park spaces. 1,148.
- Free surface. 49,974 m².
- Architect. SANJOSE Perú.



SPAIN

EXTENSION OF THE CASTELLANA, MADRID

Expected budget. EUR 10,953 million.

Surface. 3,120,658 m².

Extension of the Castellana. In more than 2.6 km.

Housing units. 17,000 (4,000 social homes).

Offices. 1,200,000 m²

Shopping areas. 165,000 m²

Hotels. 165,000 m²

Green spaces. 542,000 m²

Cycle path. 18 km.

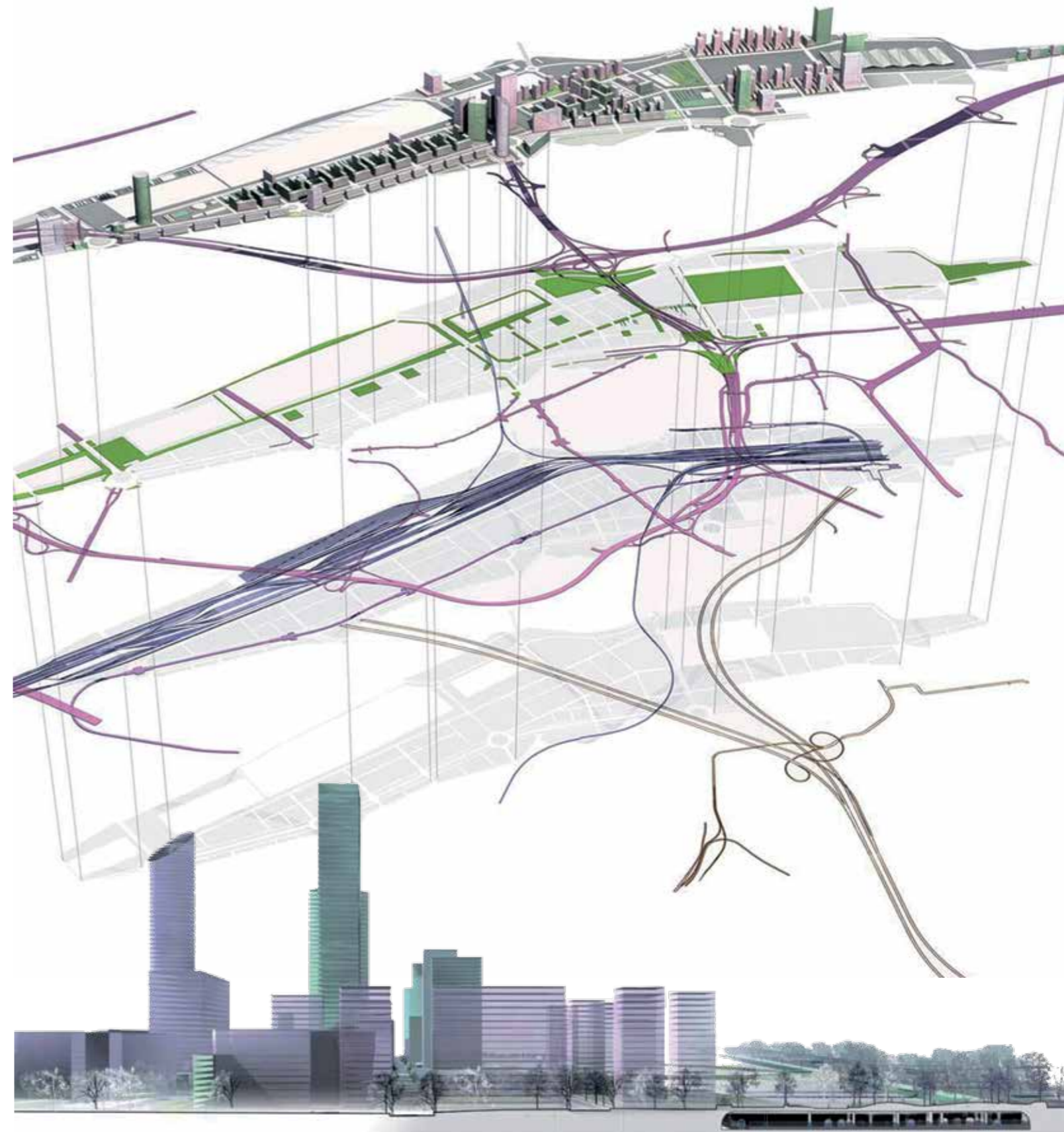
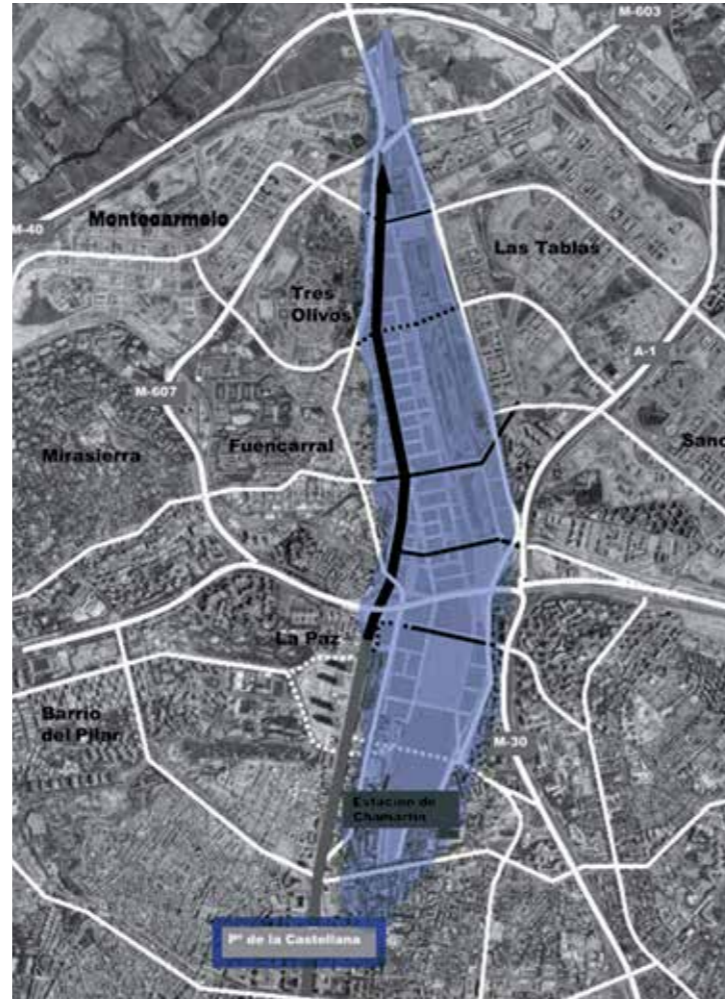
Architect. José María Ezquiaga.

Transformation of the skyline of Madrid. 15 buildings of more than 25 floors, among which highlights a 60-storey building - the highest building of the capital city.

Energy efficiency and sustainability. Energy savings up to 40% and drinkable water savings up to 24%.

Infrastructure and Transport Commuting savings up to more than 9 hours a day, what involves saving up to EUR 100 million.

Project management. Desarrollo Urbanístico de Chamartín (DUCH), associate of Grupo SANJOSE and BBVA.



PROPERTY

The property business strategy of SANJOSE consists mainly of investing in all real estate assets capable of providing high added value to customers and generating recurrent profits less exposed to economic cycles.

Among its primary activities, highlights mainly the rental of offices and shopping

centres. Real estate devoted to rental purposes is located in prime areas, such as Madrid, Barcelona, Lisbon, Oporto and Paris. SANJOSE Inmobiliaria manages more than 200,000 m² and has an occupation ratio of 94.5% in terms of the primary building portfolio. In general terms, property is rented to first rate and solvent clients, such as Endesa, France

Telecom-Orange, Telefónica-Terra, Bank of New York Mellon, Mediobanca, Iberdrola, Generali, Sol Meliá...

Main property assets

Shopping Centres

Puerta Europa Algeciras, Cadiz. Gross rental surface (GRS) 29,450 m²

Parquesol Plaza, Valladolid. GRS 6,388 m²

Parque Laguna, Laguna de Duero, Valladolid. GRS 4,252 m²

Dot Baires Shopping, Buenos Aires (Argentina). GRS 59,386 m²

Shopping arcades of three shopping centres at Avellaneda, La Tablada and Quilmes (Gross Rentable Surface 18,307 m²). GRS 18,307 m²

Hotels

Vincci Selección Posada del Patio Hotel, Malaga. 5* hotel and 104 rooms

Tryp Apolo Hotel, Barcelona. 5* hotel and 314 rooms

Tryp Pelayo Hotel, Gijon. 4* hotel and 132 rooms

Tryp Recoletos Hotel, Valladolid. 4* hotel and 80 rooms

Tryp Sofia Hotel Valladolid. 3* hotel and 70 rooms

Administrative buildings

Neo Building, Avenida del Paralelo de Barcelona. 37,575 m²

Blau Port Building, El Prat de Llobregat (Barcelona). 11,495 m²

Atica 5 Building, Pozuelo de Alarcon (Madrid). 12,293 m²

García Martín 21 Building, Pozuelo de Alarcon (Madrid). 8,312 m²

José Abascal 45 Building, Madrid. 6,405 m²

Torregalindo 1 Building, Madrid. 4,350 m²

Via Dos Castillas Building, Pozuelo de Alarcon (Madrid). 3,930 m²

Building at 7, Jose Echegaray St., Business Park of Las Rozas (Madrid). 2,998 m²

Burgo Building, Oporto (Portugal). 35,000 m²

Duque de Palmela Building, Lisbon (Portugal). 7,125 m²

Duque de Loulé Building, Lisbon. 5,331 m²

Rue de la Bienfaisance Building, Paris (France). 3,823 m²

Other

Ballesol Senior Residential Centre of Valladolid. 6,668 m²

Industrial premises at Las Gandaras Business Park, Porriño (Pontevedra). 7,780 m²

Industrial premises at Odivelas, Lisbon (Portugal). 3,825 m²



Puerta Europa Algeciras, Cadiz (Spain)



Avellaneda Shopping Centre, Buenos Aires (Argentina)



Vincci Selección Posada del Patio Hotel, Malaga (Spain)



Burgo Building, Oporto (Portugal)



José Abascal 45 Building, Madrid (Spain)

RESIDENTIAL DEVELOPMENT

SANJOSE executes small and medium sized projects oriented towards medium and high priced clients looking for first homes at main urban centres or selective second homes.

Quality is a must for SANJOSE. Therefore, projects are distinguished by the attention to details at all development stages: acquisition of land, concept, design and construction.

Due to the current financial situation, all efforts and resources focus on meeting sales objectives for the year, whereas the execution of new residential developments shall be adapted to market demands where it operates.

Land reserves amount to 882,000 m² arranged into several countries, such as Spain, Portugal, the United states, Peru, Argentina and Brazil. 90% of total

land qualifies as land for development, whereas the remaining 10% is pending qualification.

Main residential developments

North

- Parquesur Stage II, Valladolid. 77 housing units (high level of sales)
- Paseo de Jalon, Valladolid 68 housing units (average level of sales)
- Jardines de Zorrilla, Valladolid. 205 housing units (last units to be sold)
- La Joya 108, Valladolid. 15 housing units (average level of sales)
- La Joya 109, Valladolid. 15 housing units (average level of sales)

Andalusia

- Babaco in Churriana, Malaga. 84 housing units (last units to be sold)
- Mirabella in Casares, Malaga. 67 housing units (average level of sales)
- Alameña in Espartinas, Seville. 36 housing units (average level of sales)
- Avenida Libertad in Dos Hermanas, Seville. 36 housing units (last units to be sold)
- Guadalmarina I in Sotogrande, Cadiz. 31 housing units (last units to be sold)
- Guadalmarina II in Sotogrande, Cadiz. 54 housing units (last units to be sold)

Central area

- Reserva de Guadarrama, Madrid. 140 housing units (last units to be sold)
- Pinar del Parque in Navalcarnero, Madrid. 135 housing units (high level of sales)
- Spacio Salamanca, Madrid 28 housing units (last units to be sold)

Levante and Catalonia

- Viñadelmar in La Manga del Mar Menor, Murcia. 198 housing units (average level of sales)

Galicia

- Victoria Building in Plaza de Compostela, Vigo. 31 housing units (average level of sales)

Portugal

- Novo Rumo Building in Maia, Oporto. 79 housing units (high level of sales)
- Casas Brancas Building in Porto Douro, Oporto. 49 housing units (high level of sales)
- Marina Village in Lagos, El Algarve. 22 housing units (average level of sales)



Victoria Building in Plaza de Compostela, Vigo (Spain)



Reserva de Guadarrama, Madrid (Spain)



Marina Village in Lagos, El Algarve (Spain)

Other associates

SANJOSE is present at the real estate sector through its participation in several associates which strengthen its presence at this business line:

KANTEGA

Venture with La Caixa. It owns a building at Recoletos, in the city centre of Madrid with a total surface amounting to 3,300 m².

ANTIGUA REHABILITACION

In joint venture with Grupo Larcovi, It holds a total of 95,000 m² of buildable plots of land devoted to the execution of housing units in Colmenar Viejo (Madrid),

Alcorcon (Retamar de la Huerta), Berrocales (Madrid) and Conil (Cadiz).

PONTEGRAN

In joint venture with Inmobiliaria Osuna. Development of more than 79,000 m² of homes and commercial premises at the former railway station of San Bernardo, in Seville The sale of the Maestranza Building, consisting of 79 homes, has been completed, while Puerta Real Building, consisting of 104 housing units, and Puerta Principe, consisting of 132 housing units, continue on sale.

Further, it has 33,000 m² arranged into three plots of land at the same location prepared for residential and commercial development purposes.

MAKALU

Venture with Bouygues. It has sold out all housing units comprising Residencial Palatino in Velez (Malaga) and owns a plot of land of 20,266 m² for the implementation and development of offices.



Energy Efficiency Renewable Energy

ENERGY EFFICIENCY

SANJOSE as ESCO (Efficiency Service Company) provide energy management services devoted to increase optimisation and project efficiency while reducing the consumption of primary energy and the emission of CO₂ and other greenhouse gas emissions

The Group provides all economic and human resources necessary for the development of projects and initiatives,

uses last-technology generation and distribution techniques adapted to project requirements and takes part in the maintenance and operation of facilities, while pledging its commitment to energy savings.

SANJOSE provides this line with high added value through its experience as contractor and promoter, the multidisciplinary teams of professionals integrating

the company and the specialised services and solutions tailored to address clients' needs regarding Engineering (design and analysis), Operation and Maintenance and Energy Management.

Main projects

Science and Technology Park of Cerdanyola del Valles, Barcelona Sale of electrical and thermal energy

Hospital of Aviles, Asturias. Sale of electrical and thermal energy

Hospital of Puerto Real, Cadiz. Sale of electrical energy

Hospital of Torrecardenas, Almeria. Sale of electrical energy

Hospital of Jaen. Sale of electrical energy

Primary Health Care Centres of Catalonia (CAPS) of Just Oliveres, Anoiá, Parragones and Villanova del Camí. Sale of electrical energy

Hospital of Torrecardenas, Almeria



SPAIN

COGENERATION HOSPITAL OF AVILES, ASTURIAS

Supply of electrical and thermal energy (heat and cool) to all areas of activity of this 436-bed hospital.

Facilities scope of the contract are the Cogeneration Power Station (Cogeneration engines, exchangers, recovery boilers and aero generators), conditioning and generators.

Scope of services include the operation and maintenance of the cogeneration power plant; the provision of thermal energy; production of electrical energy; conductive, preventive, predictive, corrective, technical and legal maintenance services; prevention and control of legionellosis; cleaning of technical rooms.



SPAIN

DISTRICT HEATING AND COOLING POLIGENERATION POWER PLANT ST-4 OF THE SCIENCE AND TECHNOLOGY PARK OF Cerdanyola del Vallès, Barcelona

Power supplier of the first particle accelerator synchrotron in Spain and south-western Europe: Alba Synchrotron

This polygeneration plant will allow energy savings of 109,000 MW/hour each year and will reduce CO₂ emissions by 7,500 tons per year, what represent, compared to traditional energy systems, savings up to nearly 35% by using residual energy (heat generated by electrical motors) for the production of cold and hot water.

The ST-4 has pioneering facilities at European level that have been subsidized by the European Union through the project Polycity, such as: a refrigeration machine by double-effect absorption only in Europe, which uses the heat generated by electric motors to cool water from the district cooling network; a thermal storage tank of large capacity, which allows the plant to operate at a steady pace for 24 hours a day; or an advanced energy management system that optimizes plant efficiency.

The system will also incorporate two renewable energy facilities on a trial basis at European level: a biomass gasification plant and a solar cooling plant.

Based on a design which increases energy efficiency and energy savings, it incorporates many technology items:

Cogeneration engines. 3 of 3.35 MW each.

Absorption machines . 2 of 50 MW each.

Chillier. 2 of 5 MW each.

Storage tanks. 2 of 5,000 m³.

Boilers. 2 of 4 MW each.

Refrigerating towers.

Gas Natural boiler.

Cogeneration engines



ST-4 Power Station and Alba Synchrotron Particle Accelerator



Refrigerating towers



DHC pumping system

RENEWABLE ENERGY

The development and execution of renewable energy projects is a must for SANJOSE, a business group committed to sustainability, the environment and the optimisation of resources.

In order to develop clean and endless energy resources, SANJOSE relies on specialised teams of professionals around the world which are capable of implementing any type of renewable energy project. Thus, it has taken part in the de-

velopment and execution of wind parks, photovoltaic solar farms, biomass plants, geothermal centres and minihydraulic plants, etc.

Main projects

Carapé I Wind Plant, District of Maldonado (Uruguay) / 50 MW

Carapé II Wind Plant, District of Maldonado (Uruguay) / 40 MW

Wind plant in Lugo / 29 MW

PV solar farm in Alcaudete, Jaen / 5,4 MW

Biomass plant in Forcarey, Pontevedra / 2 MW

Biomass plant in Cervantes, Lugo / 2 MW

Biomass plant in A Véjija, Orense / 2 MW

*Several renewable energy projects, mainly wind and solar projects, in Chile and Romania and wind projects in Argentina and Peru should also be noted down.



SPAIN

5.4 MW PV SOLAR PLANT IN ALCAUDETE, JAEN

Surface plot of land. 14,000 m².

Solar panels. 20,000.

It is capable of supplying electrical energy to meet a demand equivalent to 1,500 conventional homes during a 20-25 year period.





URUGUAY

WIND PLANTS IN URUGUAY (90 MW)

Carapé I Wind Plant, District of Maldonado

50 MW commercial power.
Aero generators. 17.

Carapé II Wind Plant, District of Maldonado

40 MW commercial power.
Aero generators. 14.





Health Care Buildings and Facilities Industrial Premises
Conservation of Parks and Gardens Infrastructure

HEALTH CARE

The high level of specialisation of the teams of professionals integrating the company and the sound knowledge on the specific needs and requirements of such a sensible equipment as this one, make SANJOSE Concesiones y Servicios

a reference company within the health care market.

The strategic policy of the Group and the experience and expertise gained at hospital and health care projects have

enabled the establishment of a sound, innovative and competitive division at international level.

Main projects

- El Carmen Dr. Luis Valentin Ferrada Hospital, Maipu - Santiago de Chile. Concession
- La Florida Dr. Eloísa Díaz Insunza Metropolitan Hospital, Santiago de Chile. Concession
- La Mancha General Hospital - Centro, Alcazar de San Juan. Maintenance services
- Hospital of Talavera, Castilla La Mancha. Maintenance services
- Sant Pau Hospital, Barcelona. Maintenance services
- Hospital of Aviles, Asturias. Maintenance services
- Hospital of Puerto Real, Cadiz. Maintenance services
- Hospital of Torrecardenas, Almeria. Maintenance services
- Hospital of Jaen. Maintenance services
- Hospital of Melilla. Maintenance services
- Clinic Hospital, Barcelona. Electromedicine
- Vall d'Hebron Hospital, Barcelona. Electromedicine
- 4th Regional Health Care Area of the Community of Madrid. Electromedicine
- Hospital Complex of Orense. Electromedicine
- Reina Sofia Hospital of Cordoba. Electromedicine
- San Juan de Dios Hospital of Cordoba. Electromedicine

- Maintenance of electromedicine equipment. SANJOSE has a sound experience in the provision of maintenance and conservation services within this sector, as well as action protocols and important technology transfer and technical support agreements entered into with the most important electromedicine manufacturers within the market.



CHILE

MINISTRY OF PUBLIC WORKS OF CHILE. HOSPITAL OF MAIPU AND HOSPITAL OF LA FLORIDA UNDER CONCESSION REGIME IN SANTIAGO DE CHILE

BOT (Built, Operate & Transfer). Design, construction and management for a period of 15 years (with the exception of health care services).

Built surface. 142,633 m².

Total beds. 766.

Infrastructure services Water, energy, lighting, conditioning, PA system, medicine gas network, vertical transport, industrial equipment, non medical furniture.

Non health care services Green spaces and landscape, cleaning, waste treatment, uniforms, cafeteria, security control, nursery, etc.

First hospitals under concession regime within the country.

Vall d'Hebron Hospital, Barcelona (Spain)



BUILDINGS AND FACILITIES

Both, public entities and private companies, such as Telefónica, Aena, DHL or the Real Madrid FC have entrusted SANJOSE and its experience the maintenance services of buildings or facilities.

These services, tailored to the needs of each client (offices, sport facilities, shopping areas, transport infrastructure, data processing centres, etc.), range from comprehensive maintenance to special

ised maintenance of certain facilities: conditioning, power supply, fire protection, etc.

Main projects

Telefonica City in Las Tablas, Madrid

Property Real Madrid

Terminal Building T1 and T2 of El Prat Airport, Barcelona

Air Navigation Control Centres of Catalonia and Levante (Eastern Area)

Aldeasa Premises at the International Airport of Madrid - Barajas

Terminal Building of the Airport of Vigo

DHL Headquarters, Madrid

Theatre - Auditorium of Revellin, Ceuta

Puerta de Europa shopping centre, Algeciras

University of Granada

Palau del Mar Building, Barcelona



TERMINAL BUILDING T1 AND T2 OF EL PRAT AIRPORT, BARCELONA

24-hour, 365 days a year Operation and Maintenance Services of the Conditioning and Gas Natural supply network of both terminal buildings and the adjoin buildings.

Terminal T1

Boilers. 5 of 5.4 MW each.

Centrifugal coolers. 6.

Screw coolers. 3 of 32.6 MW each.

Refrigerating towers. 24.

Autonomous equipment. 617.

Air craft parking area. 41.

Adjoin buildings. Energy power station. Flight Strip Services and Regulating Chamber.

Terminal T2

Boilers. 28.

Conditioning - Heating - Coolers. 202.

Autonomous equipment. 380.

Air craft parking area. 30.

Adjoin buildings. 30 (Terminal buildings, Modules, Control Centres, Regulator Boxes, etc.).

Total passengers in 2012. 35,145,176.



SPAIN

PROPERTY REAL MADRID

Medium and low voltage facilities, conditioning, plumbing works, locksmith, security equipment, fire protection system, hydrotherapy, water treatment station and facilities control system.

Santiago Bernabeu Stadium

Capacity. 85,454 seats, with an average public attendance during season 11/12 of over 2 million people. "Bernabeu Tour" museum. More than 850,000 visitors in 2012 from more than 100 different countries.

Adjoin building. 7,000 m² devoted to house offices and stores. "Elite" stadium, according to UEFA.



Sport City of Valdebebas.

Surface plot of land. 1,200,000 m².

Developed surface. 360,000 m².

Built surface. 21,578 m².

Football pitches. 10.

Alfredo Di Stefano Stadium. 6,000 seats.



TELEFÓNICA CITY IN LAS TABLAS, MADRID

Low and medium voltage electrical works, conditioning, plumbing works, locksmith and control system.

Surface plot of land. 200,000 m².

Built surface. 383,000 m².

Office surface. 191,500 m².

Buildings. 14.

Users. 12,000.

Car park spaces. 6,000.

2.8 MW solar roof.

INDUSTRIAL PREMISES

As a result of the experience gained in engineering and industrial construction projects over the last 25 years, SANJOSE has acquired a key technological character and such a level of specialisation so as to ensure non-interference of availability and continuity of service in any industrial process.

SANJOSE develops many activities in this area, among which highlight the concession of power plants, the operation and maintenance of industrial facilities and the maintenance of large production centres.

The experienced team of professional integrating SANJOSE, in combination with the strong commitment of the Group to innovation and new technology provide this line of activity with a great potential for the coming years.

Main projects

Polygeneration ST-4 Power Plant in Cerdanyola del Vallès, Barcelona

3.97 MW solar plant in Fustiñana, Navarra

1.26 MW solar plant in Cintruenigo, Navarra

8.89 MW solar plant in Valtierra, Navarra

0.96 MW solar plant in Ribaforada, Navarra

7.4 MW solar plant in Fontellas, Navarra

9 MW solar plant in Ablitas, Navarra

2.5 MW solar plant in Ciguñuela, Valladolid

9.99 MW solar plant in Tordesillas, Valladolid

3.33 MW solar plant in Toro, Zamora

5.4 MW solar plant in Alcaudete, Jaen

*The operation and maintenance of all solar power plants includes the operation, monitoring and preventive and corrective maintenance of involved facilities, including: followers, photovoltaic modules, inverters, distribution network, weather stations, transformation centres, substations, monitoring, and general conservation of the plots of land.

5.4 MW solar plant in Alcaudete, Jaen



3.33 MW solar plant in Toro, Zamora



CONSERVATION OF PARKS AND GARDENS

SANJOSE has a wide experience and a high-level of specialisation in the creation, conservation and improvement works of some of the most remarkable green spaces of the country.

Special attention should be paid to parks and gardens located within the so-called Zone 2 of the City Council of Madrid, the most important of the country in terms of budget and surface (the contract has been extended this year).

The specialisation and professionalism shown by SANJOSE, its references and experience within the sector, guarantee a solid future within this competitive sector.

Main projects

Moncloa - Aravaca District: Plaza de España, Paseo del Pintor Rosales, Puerta de Hierro, Parque de Arroyopozuelo, Parque de la Bombilla...

Fuencarral District - El Pardo District: parks and gardens of La Vaguada, La Alcazaba, Norte and El Pardo, Las Tablas and Montecarmelo...

Latina District: parks and gardens of Cuña Verde, Cerro de Almodovar, Aluche, Avenida de Portugal and Las Cruces...

Conservation and improvement works of the green spaces of the Canal de Isabel II in zones D, E & F

Conservation works of indoor and outdoor gardens and irrigation network of IFEMA (Madrid)

Management of the cleaning and conservation services of the parks and gardens of Mostoles (Madrid)

Maintenance and conservation of the green spaces of Ferrol, A Coruña

Maintenance and conservation of parks and gardens located within the south and east areas of the City Council of Valladolid

Conservation and improvement works of the green spaces of the Parque de la Plaza de Castilla and Canal de Isabel II

Actions for forest fire prevention, forest works and conservation works of the gardens of the Palacio de la Zarzuela (Madrid) for National Heritage

Restructuring works of Huerto de Los Leones, "El Jardin de Las Palabras", of the City Council of Alcala de Henares (Madrid) World Heritage Site



SPAIN

DISTRICTS OF FUENCARRAL - EL PARDO, LATINA AND MONCLOA - ARAVACA

Grassland surface. 375 hectares.

Bush vegetable surface. 135 hectares.

Forest surface. 246 hectares.

Gardeners. 1,870.

Tress. 96,500.

Bushes. 19,600.

Sport areas surface. 34 hectares.

Playground surface. 12.5 hectares.



INFRASTRUCTURE

Grupo SANJOSE in its continuous geographic and business diversification process, pledges its commitment to private-public partnership of infrastructure projects under concession regime.

Nowadays, the company is actively present in several countries, all of them complying with legal security and institutional stability requirements, where ambitious investment

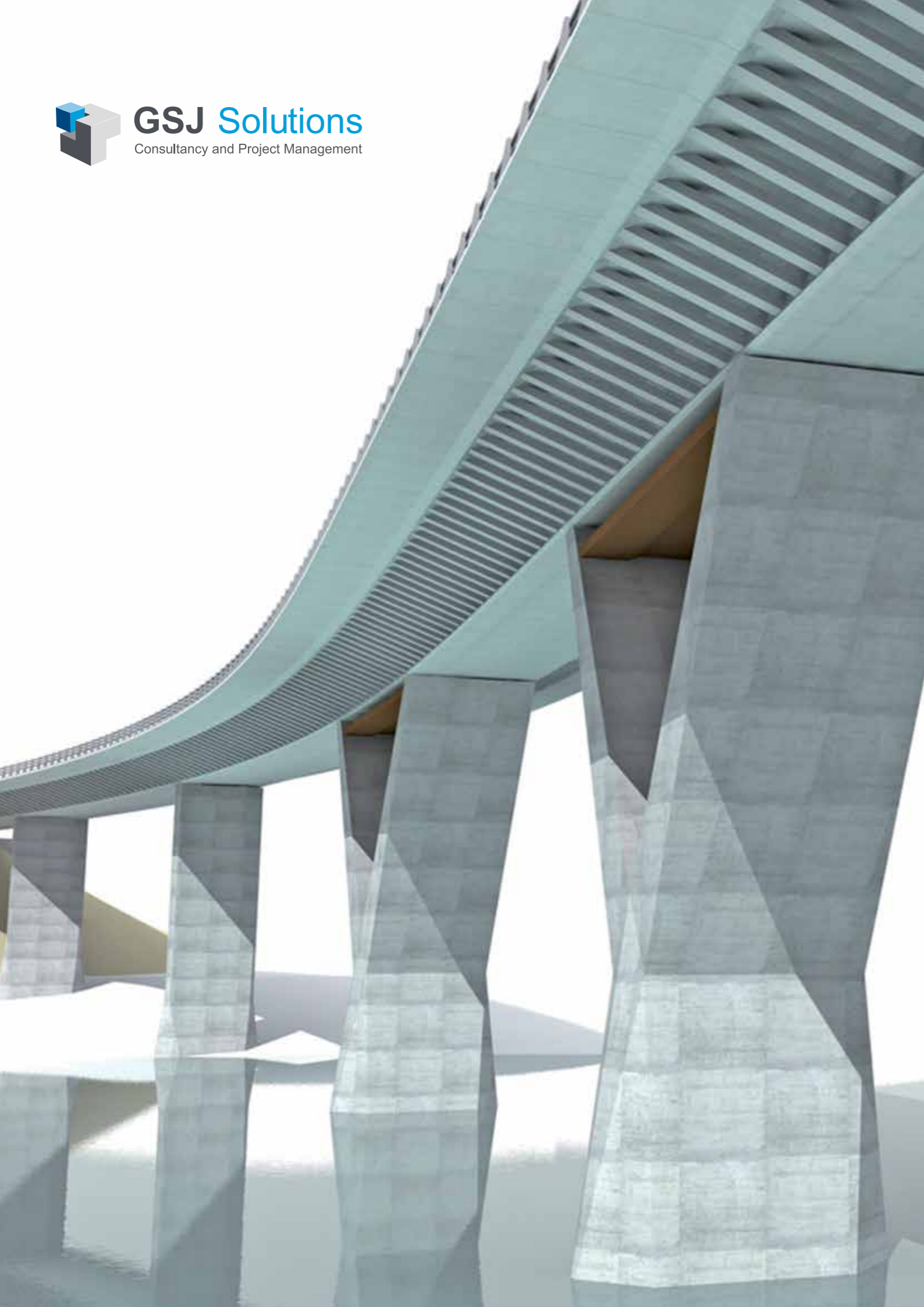
programmes are being implemented for the development of transport infrastructure and social facility projects under concession regime.

Grupo SANJOSE relies on a team of professionals specialised in tender, financing and management of great projects under concession regime worldwide. The specialisation and growth of the company in this

complex market is clear by the success of the afore mentioned projects of the hospitals of Maipu and La Florida in Chile, the Rutas del Loa Highway in Antofagasta in Chile and the ring road project of Jaipur in India.



Ring Road Highway of Jaipur (India)



Architecture Civil Engineering / Infrastructure Real Estate Management
Technology / R&D&i Sustainable Development

CONSULTANCY AND PROJECT MANAGEMENT

GSJ Solutions is a global provider of construction, engineering, energy and new technology services and products for both, Public and Private Customers.

GSJ Solutions is a company devoted to join in/provide its experience and technical expertise in order to carry out its clients' projects, as a whole or at any stage: planning, design, control and monitoring, management and execution.

The experienced teams of professionals specialised in different activities and markets, as well as their full commitment to clients, make GSJ Solutions the best partner to provided projects with high added value and an innovative and effective point of view.

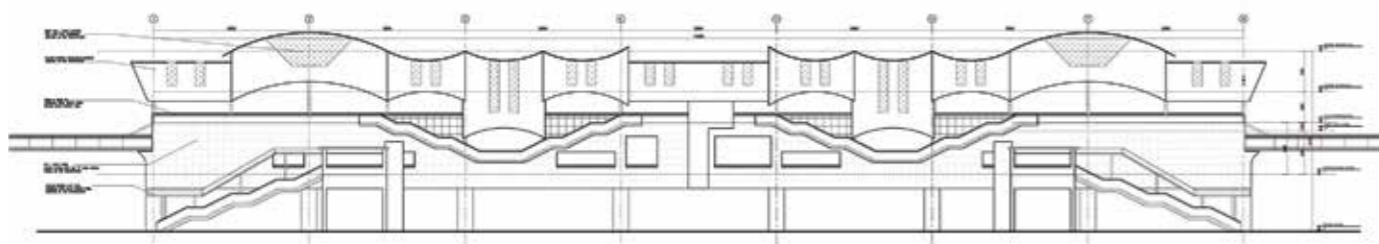
A key element for turning projects into a reality is ensuring their financial feasibility. GSJ Solutions relies on the experience

and know-how of teams of professionals qualified for both, organising the adequate financial structure and setting up its adequate implementation.

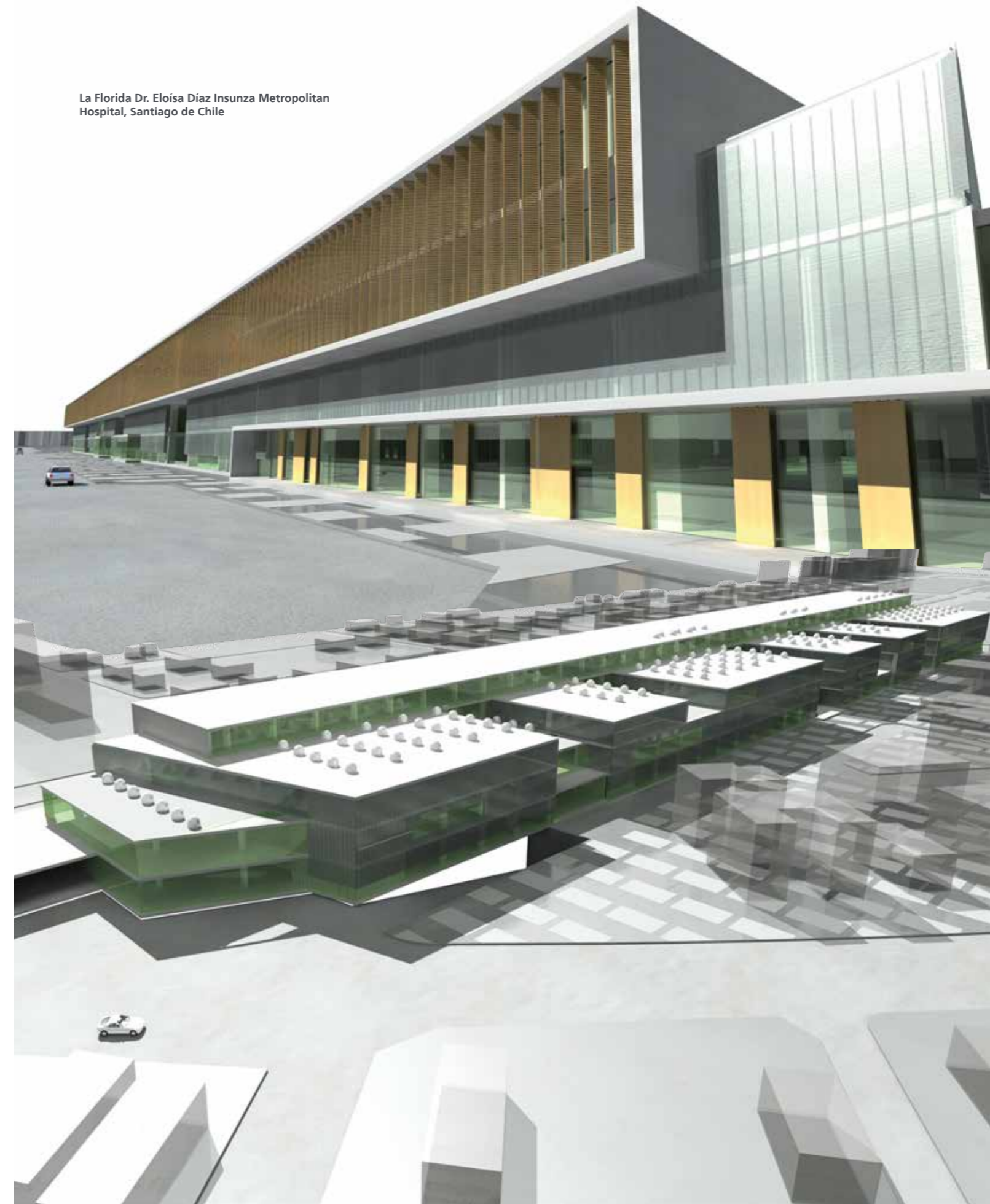
GSJ Solutions provides advice on decision making and executes all necessary actions so as to accomplish clients' goals and improve competitiveness, quality and profitability of projects at any stage.

| CONCEPTUALISATION | EXECUTION | OPERATION |
|--|---|---|
| <ul style="list-style-type: none"> • Project feasibility (including funding feasibility). • Design in compliance with social, economic and environmental requirements. • Optimisation of resources. | <ul style="list-style-type: none"> • Financial structure. • Technical execution. • Legal framework and regulations. • Cost controlling. | <ul style="list-style-type: none"> • Profitability and recovery of investment. • Sustainability. • Commitment. |

Metro stations of Line 1 of Navi Mumbai Metro Network, Mumbai (India)



La Florida Dr. Eloisa Díaz Insunza Metropolitan Hospital, Santiago de Chile





ARCHITECTURE

Environment, functionality, aesthetic value, historic relevance, importance, social sensitivity, sustainability, energy efficiency, innovation, investment criteria, etc. The elaboration of a building project involves a great many of requirements to be taken into account before the execution of the project itself, which may be even more important than final purpose and potential uses of the building itself: Health Care, Education, Sports, Leisure and entertainment, Offices, etc.

*More than **25,000,000 m²** of developed surface*

***60,000** housing units / **70** hospitals / **40** shopping centres / **60** hotels and resorts / **160** cultural buildings / **250** administrative buildings and offices / **150** restoration works*

El Carmen Dr. Luis Valentin Ferrada Hospital, Maipu - Santiago De Chile



CIVIL ENGINEERING / INFRASTRUCTURE

The development of transport infrastructure requires careful planning, preliminary analysis, funding models (public, private or both) which allow their implementation, as well as many other aspects to be taken into consideration by qualified and experienced professionals in order to meet the clients' and the society's requirements.

*More than **550 km** of railway line, highways and roads*

*More than **75 viaducts / bridges** and more than **15 tunnels***

*Projects for more than **10 airports** in Spain, Panama, the United States and Nepal*



REAL ESTATE MANAGEMENT

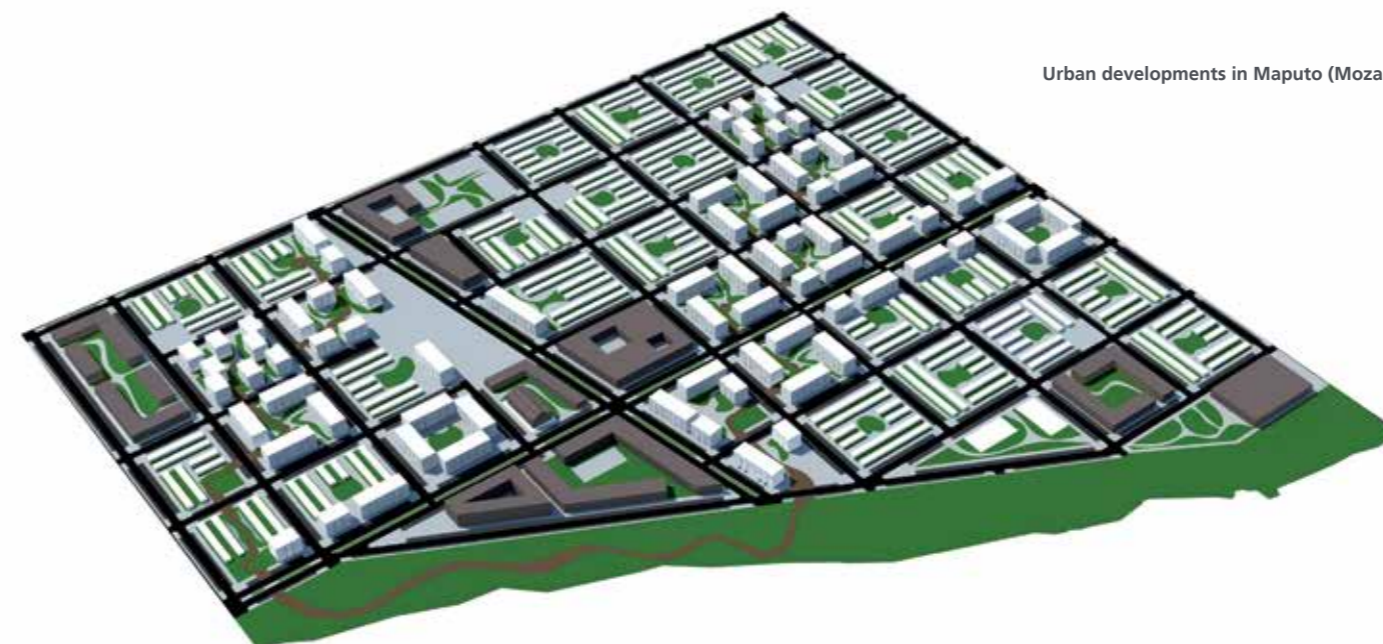
The real estate management and strategy of GSJ Solutions considers each project individually, analysing its context, its alternatives and all related business opportunities.

Consultancy and management services cover all real estate market opportunities. The sound knowledge and experience of the company in all areas of activity within the sector provide a global vision capable of combining solutions and services according to clients' needs, identifying potential difficulties in advance and providing an efficient response at each stage of the project.

*At present it manages **4,500,000 m²** of land assets, **7** great urban developments with a total surface amounting to **1,470 ha***

*Over the last 10 years: more than **8,500** housing units / **166,500 m²** devoted to commercial surface / **75,000 m²** to offices / **22,000 m²** to hotels*

*It manages a property portfolio of over **365,000 m²***



Urban developments in Maputo (Mozambique)

TECHNOLOGY / R&D&i

The commitment of GSJ Solutions to clean energy resources and energy efficient is total. Thus, actions undergone by professionals integrating the same shall consider all optimisation possibilities regarding both, investment and natural resources.

Innovation and the use of avant-garde technology is a key differentiating element and an added value for any industrial, energy or environmental project to be carried out by GSJ Solutions.

*More than **600 MW** of Renewable Energy*

*Energy efficiency projects which involve a reduction of **100,000 T** of CO₂ emissions per year*

***1,000,000** hours of men work in maintenance services*

***Maintenance and operation of projects** of over **1,000** clients (more than **100** hospitals)*

SUSTAINABLE DEVELOPMENT

The socioeconomic development of a property or large estate shouldn't commit the resources and opportunities of future generations. Sustainable developments executed by GSJ Solutions are pledged to devote each plot of land to the most appropriate use, to rational exploitation capable of ensuring profitability of investments and clients' satisfaction and to provide a revalue heritage for improvements in land and infrastructure and future potential productivity capacity of the same.

*It is implementing more than **250,000 ha** in Paraguay and considering new exploitations in different countries and continents*



Agriculture

Stock Breeding

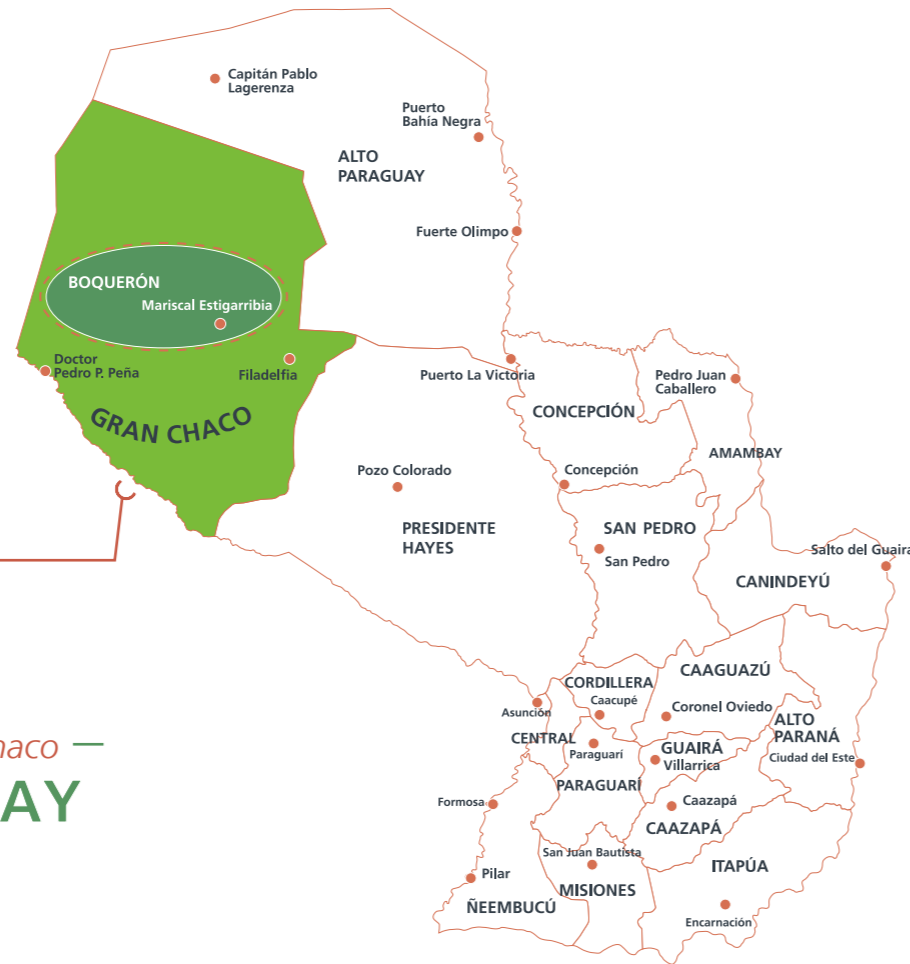
Bio Energy and Bio Fuels

257,000

hectares at the Paraguayan Chaco



— Paraguayan Chaco —
PARAGUAY



Carlos Casado, founded in 1909 and listed on the Buenos Aires Exchange Market (1958) and New York Exchange Market (2009), is a company majority-controlled by SANJOSE with more than 257,000 hectares of land in the Paraguayan Chaco, a strategically located area bordering Brazil, Argentina and Bolivia with a stable social and institutional framework with great capacity for economic development.

Carlos Casado is one of the top agriculture and cattle industries of Latin America. 2012 has been a very positive year for both, the appreciation of land and the advances achieved at agriculture and stock breeding development at the Paraguayan Chaco. It is one of the most important suppliers of soya, wheat, sorghum, etc. at worldwide level.

Its Business Plan focuses mainly on the following:

- International Expansion.
- Adding value to and exploiting its assets.
- Consolidation of its historical, agricultural and industrial activities.
- Important investment at all business lines, mainly stock breeding through Parsipanny Corp. S.A.; agriculture through Cresca S.A., and agro-energy research.

It is important to highlight that all investments have been carried out with profit generated at the company and that dividends have also been paid up.

Finally, note down that oil fields discovered in the area may indicate the existence of important oil levels.

Depending on the proximity of the same to the land property of Casado, the Director will agree onto alternative appropriate measures.

Despite knowing for sure that land located at the Paraguayan Chaco is the best for harvesting purposes, at present this is not a priority within the Business Plan of Carlos Casado.





PARSIPANNY CORP. S.A.

Uruguayan business of Carlos Casado with 45,000 hectares of land in the Paraguayan Chaco devoted to raise chemical-free livestock for exportation purposes in order to make headway in a market which increasingly demands ecological food products.

Stock-breeding production has been increased during this year, reaching 3,000 heads of top quality stock with traceability certificate.

CRESCA S.A.

Carlos Casado and Agropogy (belonging to Cresud S.A., listed on the New York Exchange Market), participate 50% in this business which is currently developing in the Paraguayan Chaco an important mixed crop-livestock farming project of 142,000 hectares of land, which meets its ambitious Business Plan.

During this year, a new plot of land under the name of UDRA has been developed increasing production land to 15,000 hectares.

At year-end the company expects to reach 12,000 hectares sown and harvested.

Regarding livestock developments, Cresca includes 3,000 heads of 500 k weight in average.

AGRO - ENERGY (R&D&I)

Carlos Casado has continued with important research and development activities at the nursery "Jatropha Curcas" for the development and establishment of this tree, which due to its high oil content and non food chain item has a magnificent potential for agro-energy production.

Parsipanny stock breeding



"Jatropha Curcas" Nursery



Cresca production





Arena AND1 Teva Nike Accesorios Hunter Fred Perry
Dr. Martens Ewan

Comercial Udra, commercial division of Grupo SANJOSE, focuses business on two lines of activity: Sports and Fashion, relying on well know and prestigious international brands. Due to its sound

knowledge of markets where it operates, the specialised teams of professionals integrating the same, the evolution and the high quality of trading brands, Comercial Udra has currently become

one of the most important suppliers within Spain and Portugal.



SPORTS



ARSEREX S.A.U.



Arsenex has been the distributor of the prestigious international brand of swimwear Arena in Spain since 1993. In 2008 it incorporated distribution in Portugal .

At international level, Arena, as swimwear leader, launched in 2012 the Powerskin Carbon Pro swimsuit, which due to its unique technology within the swimwear market has beaten all sport records. For example, at London Olympics where swimmers sponsored by Arena achieved a total of 35 Olympic medals. The leadership and commitment of the brand has led the same to enter into a sponsor agreement with the USA Swim Federation, the most prestigious swimming club worldwide. Further, the Netherlands Swimming Federation is also sponsored by the brand, as well as a long list of other clubs.

In Spain, Arserex sponsors some of the best federations and swimming clubs, such as the Sant Andreu Swimming Club, one of the most important within Spain. Further, Arena sponsors several sports events, such as the International Award City of Barcelona.



Regarding trading purposes, Arena may be found at major distribution channels, such as El Corte Inglés, Sport Zone, Forum Sport, Décimas, Calderón Sport, Intersport or Base Detall Sport, among other, and is the leader brand within its market sector.

BASKET KING S.A.U.



Basket King has been the exclusive distributor of the American brand And1 in Spain and Portugal since 1999.

Basket King has been supporting the basketball market for more than ten years in Spain and Portugal by sponsoring many sports events, tournaments and competitions. In 2012, highlight, among other, the 3X3 FIBA of Las Palmas de Gran Canaria and the Lavapiés Streetball Champs, the best streetball tournament in Spain.

Further, And1 sponsors many major league players and clubs at national and international level, among other, many NBA players, such as Lance Stephenson (Indiana Pacers) and Markieff and Marcus Morris (Phoenix Suns y Houston Rockets, respectively) and the ACB Herbalife Gran Canaria.

Regarding trading purposes, And1 is present at major distribution channels thanks to the Street Basket Centre Programme, which reflects the innovative spirit of the brand.

RUNNING KING S.A.U.



Since January 2010, Running King is in charge of the distribution in Spain, Portugal and Andorra, of Nike Accessories, including running, fitness and yoga accessories of the international world-wide leader brand.

In its third year as brand supplier, Running King has experimented a noteworthy increase of its sales and has consolidated its position within the main distributors in the Spanish and Portuguese market

Currently, Nike Accessories is present at the main sport chains and stores, such as El Corte Inglés, Sport Zone, Intersport or Base Detall Sport, etc.

This is due to the importance of sport at current lifestyles, becoming an essential part of our life.

Its catalogue includes many different products in all lines of activity, adapted



to all kind of needs and likes, which cover from mouth guards to water bottles, yoga accessories, protectors and other training items.

Further, in 2012, the brand has launched a collection of wristbands and head bands and the collection Nike+, including different support items for mobile devices (such as, iphone and ipod) which intend to enable users to continue connected to the world and their music while practising sports.

OUTDOOR KING S.A.U.



Outdoor King is the only distributor in Spain, Portugal and Andorra of Teva, the American brand of casual and high-tech outdoor footwear.

Teva is the leader brand of outdoor sport lovers, those leading an adventure lifestyle. It also provides a casual line of footwear for those who live daily "adventures" at cities worldwide.

In 2012, Teva has positioned itself as an extreme sport reference. It sponsors many events at national and international level.



Among other, highlights the Teva Moin-tain Games (the extreme sports most important event in the USA). Outdoor King has also sponsored Lozoya Adventure Festival, Raid Barcelona Marítim and the Kayak Extreme Tournament.

Currently, the brand is present at the best specialised shops and largest sporting distribution centres, such as El Corte Inglés, Intersport or Forum.

VISION KING S.A.U.



Since 1 December 2012, VISION KING is responsible for the distribution of VISION, one of the most prestigious paddle brands.

The brand was founded in 1998 and has played a key role in the spectacular growth of this sport in Spain. VISION was the first brand to promote the professionalism in paddle tennis by formalising the first sponsor agreements with players.

Currently, VISION is the sponsor of the one of the most important players of the professional Paddle Pro Tour: Carlos Daniel "SANYO" Gutiérrez, ranking 4.

Further, VISION is one of the main collaborators of PPT, being the official ball since its foundation in 2006.

The brand is present at major distribution channels, such as El Corte Inglés and Decathlon, as well as many specialised stores within the sector

FASHION



OUTDOOR KING

HUNTER

Outdoor King is the only distributor of Hunter boots in Spain and Andorra since year 2003.

With more than 100 years of history, Hunter launched its flagship boot in 1956, the Wellington Classic, hand-made, using the finest natural rubber and 28 different pieces of rubber in order to ensure maximum comfort at rainy and humid conditions.

Hunter has become a worldwide reference brand providing classic style design adapted to new fashion trends. Its Wellington boots, associated to rainy weather, are present worldwide regardless weather conditions.

In 2012, Outdoor King continued to be one of the most important distributors worldwide, just behind Japan. This is the result of a marketing campaign based on its presence at specialised events and well-know fashion magazine, such as the Land Rover Discovery Challenge, where fashion and engine celebrities met.

Regarding trading purposes, Hunter has brand stands at several El Corte Inglés shopping centres, such as Castellana, Serrano and Pozuelo in Madrid or Diagonal and Portal del Ángel in Barcelona. Hunter is also present and major Boutiques in Spain, together with other first level brands.

TRENDY KING



Since 2008, Trendy King is the official distributor in Spain and Portugal. of Dr. Martens, footwear of the 21st Century. Dr. Martens is a prestigious international brand related to alternative music that has always stayed true to its identifying signs regardless fashion trends.

At domestic level, during 2012, Trendy King has focussed its efforts on connecting the brand to its public by developing an active marketing campaign at social networks. Trendy King faces future challenges by using last technology resources in order to make Dr. Martens an avant-garde reference.



Continuing his rebel and non conformist character, Dr. Martens maintains its presence in concerts and events looking for an "underground" perspective, regardless fashion trends.

From a commercial point of view, year 2012 has launched its distribution at major distribution networks El Corte Inglés and Grupo Yorga. Further, its "Made in England" collection remains commercialisation at the best boutiques of Spain.

Trendy King also is the distributor in Spain since 2007 of the footwear of the legendary English brand Fred Perry,

Founded at the end of the 40s by the famous tennis player Fred Perry, the legendary brand made the jump from the tennis courts to the street and its polo-shirts became a basic item of clothing for the British youth.

Fred Perry has known to evolve and adapt to every time period without losing its British flavour, creating new lines of production, such as accessories and footwear, which imply 50% of its European turnover.

At international level, the most important event has been the anniversary of the brand, on the market for 60 years. These six decades have been marked by the relationship of Fred Perry with the Britannic culture and the music. This legacy can be seen in the documentary commemorating the anniversary, made by Don Letts, which reviews the major milestones in the history of music that had a strong impact on the fashion world and in whose development was present Fred Perry.

To celebrate, Trendy King organised in Madrid the Festival Fred Perry 52 12, three days with the best independent music and the screening of the documentary.

From a commercial point of view, in order to increase the presence of the brand, the brand is working hand in hand with El Corte Inglés so as to open brand stands at the footwear department. During 2012, Fred Perry stands have been opened at Sanchinarro, Alcalá, Pozuelo and Bahía Sur.



EWAN CONNECTION S.A.U. EWAN

The fashion brand Ewan became a member of Comercial Udra through Ewan Connection SAU in May 2012 after reaching an agreement with its creator, the musician (guitarist of El Sueño de Morfeo) and photographer Juan Luis Suárez.

Ewan is a lifestyle firm whose values, friendship and attitude are projected onto a collection of items related to music, art and the sea.

This first stage sets the basis for its development and implementation at domestic market. Thus, a new brand logo has been developed and shall be present at all cloth items from 2013 onwards.

Simultaneously, we have set up a commercial structure for the entire territory in order to consolidate its presence at multi-brand distribution channels.

Further, the brand was presented to the media.

The event, where musicians and celebrities gathered, made the brand available for the public and was covered by the press and the television.

Ewan may currently be acquired at several El Corte Inglés centres, as well as boutiques around Spain.

Corporate Social Responsibility



Principles and Commitments
Quality Environment

Team SANJOSE
R&D&I

Risk Management and Safety
Relationship with Interest Groups

Corporate

Social Responsibility



Human Team SANJOSE India

PRINCIPLES AND COMMITMENTS

SANJOSE Group bases its principles on Human Rights, Labour Standards, Environment and Anti - Corruption Guidelines, the 10 principles of the United Nations Global Compact, based in turn on the Universal Declaration of Human Rights, the Declaration on principles and Rights at work, the International Labour Organisation, the Declaration of Rio on Environment and Development and the United Nations Convention against Corruption:

- Support and respect the protection of internationally proclaimed human rights in the international arena.
- Make sure they are not complicit in human rights abuses.
- Respect freedom of association and the effective recognition of the right to collective bargaining.
- Eliminate all forms of forced or compulsory labour.
- Effectively abolish child labour.
- Eliminate discrimination in respect of employment and occupation.
- Support a precautionary approach to environmental challenges.
- Undertake initiatives to promote greater environmental responsibility.
- Encourage the development and diffusion of environmentally harmless.
- Work against corruption in all its forms, including extortion and bribery.

Grupo SANJOSE understands the Corporate Social Responsibility as its commitment to society and people. It is a key element of business strategy and a differentiating item which has been in continuous development since its foundation. Acting in a responsible, transparent and sustainable way in order to promote wealth and welfare and boost its principles and commitments to each professional integrating the Group and to all executed acts:

- Maximum attention to people, to the quality of their working conditions, equality and training.
- Work Risk Prevention as company culture, especially preventive at all hierarchical levels of the Group.
- Respect for diversity and creation of a policy of equal opportunities and personal and professional development.
- Commitment to sustainable development and greater respect for the environment, avoiding any possible pollution and minimizing waste generation.
- Public Vocation and wealth. Understanding R&D&I and the quality of products and services as the GSJ contribution to improve social, economic and environmental development of the regions or countries where it operates.
- Implementation of formal procedures and open dialogue with all stakeholders.
- Transparency policy.

TEAM SANJOSE

Team SANJOSE is the most important capital. Thus, its recruitment, training and management are a priority for the Group. The experience, knowledge and flexibility of professionals are essential for company competitiveness and meeting the Group's goals and objective.

Invest in talent provides a top added value and innovative solutions on a par which customers' requirements. GSJ believes than investing in human resources implies investing in leadership, growth, R&D&I, in the future.

Recruitment takes place in collaboration with first-rate Universities and Training Centres and trough the incorporation of reputable professional which provide the Group with their experience and know-how.

Annual Training Plans are responsible for adapting high technology to executed activities, developing personal capabilities, learning and improving languages, personal qualification and developing safety, quality, R&D&I and environmental issues.

The Human Resources Management is based on ethical codes of equal opportunity, cultural diversity, internal promotion and sound values, such as involvement, responsibility, perseverance and commitment.

RISK MANAGEMENT AND SAFETY

Grupo SANJOSE considers Risk Management an essential tool for minimising dangers inherent to business development and providing confidence to business activities worldwide.

The analysis and knowledge of risks, their assessment and a sound and appropriate protection towards the same is the best way to move forward.

• Prevention of Workplace Risks

Grupo SANJOSE always considers the prevention of occupational risks, whatever place in the world it operates, It Occupational Risk Prevention Management System complies with OHSAS 18001 and proves the existence of a clear and integrated prevention policy throughout its

structure and all hierarchical levels perfectly adapted to legal requirements of any country.

The concern and insistence on improving professionals' training is essential for ensuring the protection of workers who make projects possible.

• Insurance

Global risk management and risk protection are essential to meet the needs arising from the large external growth and to maintain adequate coverage thresholds on existing risks.

The definition of an adequate insurance policy with retention levels adapted to different scenarios is the

goal. The continued support of senior management and coordinated works of all areas involved are the tools that make this possible.

A concrete Insurance Programme, in collaboration with global, sound and solvent Insurers and Brokers, is designed and understood as a differentiating item.

Constant improvement of policies eliminates uncertainties and provides confidence to customers and shareholders.

Human Team SANJOSE Abu Dhabi



Human Team SANJOSE Perú



Stretch Colada de la Buena Vida - Murcia (Spain)



Corporate

Social Responsibility



Human Team SANJOSE Nepal

QUALITY

Grupo SANJOSE stays still to its commitment to quality in the development of activities. The continuous improvement of services and the adaptation to needs and expectations of customers, with the sole aim of achieving full satisfaction, are set as identifying signs of the company.

The result of this strategy is a quality, flexible and effective system appropriate to business sectors of the Group, which provide the framework for setting and achieving improvement targets that result in the optimisation of services and adaptation to growing demands of customers.

Involvement, motivation and commitment of the entire Group with the overall quality is total. And this has been recognised through ISO 9001 certification awarded to the following Group companies:

| COMPANY | TYPE OF CERTIFICATE | CERTIFICATE |
|--|---------------------|--------------|
| CONSTRUCTORA SANJOSE, S.A. | Quality Management | ER-0510/1997 |
| SANJOSE ENERGÍA Y MEDIO AMBIENTE, S.A. | Quality Management | ER-0335/2000 |
| CARTUJA INMOBILIARIA, S.A.U. | Quality Management | ER-1363/1999 |
| EBA, S.L. | Quality Management | ER-1170/2004 |
| CONSTRUCTORA SANJOSE PORTUGAL, S.A. | Quality Management | ER-0011/2002 |
| CONSTRUTORA UDRA, LDA. | Quality Management | ER-0102/2011 |
| TECNOCONTROL SERVICIOS, S.A. | Quality Management | ER-1202/1998 |
| ARSEREX, S.A.U. | Quality Management | ER-1675/2005 |

ENVIRONMENT

Grupo SANJOSE considers sustainable environmental management a strategic pillar of its activities and objectives.

of activities, works and services, such as protection of natural species, prevention of air pollution, water or soil, resource optimisation, etc.

renewable energy, clean technology and energy efficiency management.

SANJOSE integrates friendly processes and best environmental practices to minimise and eliminate environmental impacts arising from the development

The commitment to the environment reinforces its commitment to developing

SANJOSE has obtained recognition of its commitment to the environment by being awarded the ISO 14001 to the following Group companies:

| COMPANY | TYPE OF CERTIFICATE | CERTIFICATE |
|--|--------------------------|--------------|
| CONSTRUCTORA SANJOSE, S.A. | Environmental Management | GA-2003/0398 |
| SANJOSE ENERGÍA Y MEDIO AMBIENTE, S.A. | Environmental Management | GA-2007/0396 |
| CARTUJA INMOBILIARIA, S.A.U. | Environmental Management | GA-2006/0028 |
| EBA, S.L. | Environmental Management | GA-2007/0371 |
| CONSTRUCTORA SAN JOSÉ PORTUGAL, S.A. | Environmental Management | GA-2009/0351 |
| CONSTRUTORA UDRA, LDA. | Environmental Management | GA-2011/0013 |
| TECNOCONTROL SERVICIOS, S.A. | Environmental Management | GA-2007/0395 |

INNOVATION AND TECHNOLOGY DEVELOPMENT

Grupo SANJOSE is fully committed to technological development and innovation. Key points for the competitiveness of the company to offer more effective and tailored solutions to real customer needs and demands of society.

technological surveillance, and bring added value to the activities of the Group.

In order to facilitate the detection of opportunities, generating innovative ideas and the development of R&D&I activities, a R&D&I Management System, following the guidelines set out in the standard UNE 166002 and having obtained the AENOR recognition through certification in the following companies, has been implemented:

The Group's strategic planning efforts have led to increased investment in R&D&I in 2012, expanding both the portfolio and the scope thereof.

Among the strategic technological areas and initiatives for the development of R&D&I, highlight mainly the following areas: technologies applicable to the execution of the work, durability and safety in construction, new materials and construction processes, renewable energy and energy efficiency, industrial automation and specialized maintenance facilities, preservation of the environment and natural environment, etc...

It has promoted the establishment of strategic partnerships with universities and technology centres, both national and international, that allow us to remain at the forefront of R&D&I and

| COMPANY | TYPE OF CERTIFICATE | CERTIFICATE |
|--|---------------------|---------------|
| CONSTRUCTORA SANJOSE, S.A. | R&D&I Management | IDI-0056/2010 |
| SANJOSE ENERGÍA Y MEDIO AMBIENTE, S.A. | R&D&I Management | IDI-0055/2010 |

RELATIONSHIP WITH INTEREST GROUPS

The SANJOSE business model is based on maintaining long-term relationships based on trust, transparency and professionalism. The vocation of service to customers and society is inherent in each and every professional company which is part of Grupo SANJOSE. This culture facilitates the development of all activities of the company and its relationships with all its stakeholders.

SANJOSE considers all social groups and individuals affected by its activities, as an essential element for business development, both internal (shareholder and employees) and external (customers, suppliers, partners, public institutions, private companies, communication mediums, trade unions, investors, etc).

For ensuring an efficient and transparent and honest dialogue with interest groups, Grupo SANJOSE relies upon an internal system created for this purpose and consisting of a Supplier and Customer Protection Plan, an Investor Relations Department, Shareholder Service and Mass media Department.

Stretch Vera - Los Gallardos. Spanish High Speed Railway Line AVE Almeria - Murcia (Spain)



Head Office

C/ Rosalía de Castro, 44
36001 Pontevedra
Tel. +34 986 86 64 64
sedesocial@gruposanjose.biz

Headquarters

C/ Rosalía de Castro, 11
28760 Tres Cantos (Madrid)
Tel. +34 91 806 54 00
central@gruposanjose.biz

SANJOSE Constructora Civil Works

C/ Ronda de Poniente, 11
28760 Tres Cantos (Madrid)
Tel. +34 91 806 54 30
obracivil@constructorasanjose.com

SANJOSE Constructora Residential

C/ Ronda de Poniente, 11
28760 Tres Cantos (Madrid)
Tel. +34 91 806 54 00
central@constructorasanjose.com

SANJOSE Ingeniería y Construcción Industrial

C/ Ronda de Poniente, 11
28760 Tres Cantos (Madrid)
Tel. +34 91 807 63 00
central@constructorasanjose.com

SANJOSE Inmobiliaria

C/ Ronda de Poniente, 11
28760 Tres Cantos (Madrid)
Tel. +34 91 799 49 90
inmobiliaria@gruposanjose.biz

SANJOSE Energía y Medio Ambiente

C/ Ronda de Poniente, 11
28760 Tres Cantos (Madrid)
Tel. +34 91 807 63 15
energiaymedioambiente@gruposanjose.biz

SANJOSE Concesiones y Servicios

C/ Ronda de Poniente, 11
28760 Tres Cantos (Madrid)
Tel. +34 91 806 54 00
concesionesservicios@gruposanjose.biz

GSJ Solutions

C/ Ronda de Poniente, 11
28760 Tres Cantos (Madrid)
Tel. +34 91 806 54 00
gsjsolutions@gsjsolutions.biz

Cartuja I.

Avda. de la Buhaira. 27 1º A
41018 Seville
Tel. +34 954 98 93 10
central@cartuja.com

EBA

Avda. de los Olmos, 1
Polígono Ind. de Gamarra
Edif. Inbisa D - 1, Ofic. 106
01013 Vitoria-Gasteiz (Álava)
Tel. +34 945 15 17 05
central@ebasl.com

Comercial Udra

Avda. Europa 34, bloque C, 2º
28023 Aravaca (Madrid)
Tel. +34 91 762 82 00
comercial@comercialudra.com

SANJOSE France

253 Boulevard de Leeds - Eurailille
59777 Lille - France
Tel. +33 328 53 57 06
france@gruposanjose.biz

SANJOSE Portugal

Rua Orfeão do Porto, 360 Sala 4
4150-798 Porto
Tel. +351 226 151 830
sede.portugal@gruposanjose.biz

SANJOSE Romania

Astoria Center
Str. Dionisie Lupu, 64-66, etaj 2
Sector 1, 010458, Bucarest
Tel. +4 021 312 34 40
rumania@gruposanjose.biz

SANJOSE Turkey

Cumhuriyet Cad 42 K.5 Dörtler Apt
034437 Elmadag - Istanbul
Tel. +90 212 225 73 07
turkey@gruposanjose.biz

SANJOSE Argentina

Edificio Torre Alem Plaza
Avda. Leandro N Alem 855 piso 15
1001 Buenos Aires-CF
Tel. +5411 4315 7878
argentina@gruposanjose.biz

SANJOSE Colombia

Cra. 9A nº 99-07, of:901
Bogotá, Colombia
Tel. +57 1 520 9851
colombia@gruposanjose.biz

SANJOSE Panama

Avda. Samuel Lewis, Edificio Comosa, Piso 6
Apartado Postal 0816-01182, Panamá, 5
Rep. de Panamá
Tel. +507 264 2338
panama@gruposanjose.biz

SANJOSE Peru

Avda. Víctor Andrés Belaunde, 280. Piso 7
San Isidro - Lima
Tel. +51 1 215 0800
peru@gruposanjose.biz

SANJOSE Chile

Alcántara 44, piso 5º
Las Condes, Santiago de Chile
Tel. +56 22 5941800
chile@gruposanjose.biz

SANJOSE Brazil

Av. Tancredo Neves, 620
Edifício Mundo Plaza - Empresarial
Salas 2113 a 2115
Caminho das Árvores
41820-020 Salvador / BA
Tel. +55 71 3033 9910
brasil@gruposanjose.biz

SANJOSE USA

PO Box 39119
Washington, DC 20016
Tel. +1 202 329 5959
usa@gruposanjose.biz

SANJOSE Abu Dhabi

Office 509
Al Hilal Bank Building
Falah Street
PO Box 129 354
United Arab Emirates
Tel. +971 249 302 93
middleeast@gruposanjose.biz

SANJOSE India

Unit 602, Edificio Global Foyer
C/ Golf Course, Sector 43
Gurgaon, 122002
Haryana
Tel. +91 1 244 970 270
india@gruposanjose.biz

SANJOSE Cape Verde

Santa Maria, Apartado 231
Ilha do Sal (Cape Verde)
Tel. +238 242 2600
cabo Verde@gruposanjose.biz

SANJOSE Congo

213, Boulevard Denis Sassou Nguesso
BP.13773 Brazzaville
Republic del Congo
Tel. +242 068868282
congo@gruposanjose.biz

SANJOSE Mozambique

Avenida Namaacha km. 6
Condominio CMC escritorio nº60
Matola - Maputo
Tel. +258 845248021
mozambique@gruposanjose.biz

Construtora Udra (Portugal)

Avda. D.João II, Lote 1.03.2.1 - 7º Piso
Edifício Meridiano - Parque das Nações
1998-017 Lisboa
Tel. + 351 213 506 430
udra.lisboa@gruposanjose.biz

Pontus Euxinus Tehnologii Renovabile (Romania)

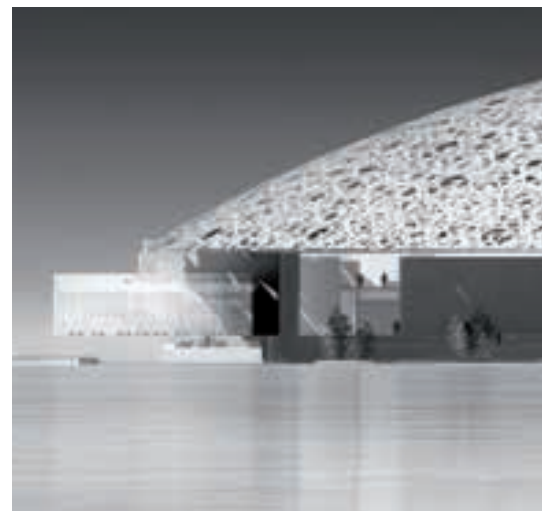
Str. Elena Clucereasa n.11
Parter, Camera 2, Sector 1
Bucarest
pontus.euxinus@sanjoseenergia.com

Carlos Casado Argentina

Edificio Torre Alem Plaza
Avda. Leandro N Alem 855 piso 15
1001 Buenos Aires - CF
Tel. +5411 4311 0170 / 0865
administracion@carloscasado.com.ar

Carlos Casado Paraguay

C/ Gómez Ríos 1244
Asuncion - Paraguay
Tel. +595 21 213 896/7/8
administracion@carloscasadosa.com.py



www.gruposanjose.biz